



Cultural Quarterly
Autumn 2010

Robert Mapplethorpe
The Madness Of George III
London Philharmonic Orchestra



Stephen Rimmer LLP

SOLICITORS



“quality assured legal services”



Residential Conveyancing
Commercial Property
Business Advice
Personal Injury
Family Law - Mediation
Probate, Trusts, Wills
Civil Litigation
Criminal Litigation
Employment
Welfare Benefits

28-30 Hyde Gardens, Eastbourne | Tel 01323 644222

www.stephenrimmer.com

4 Pushing the Boundaries
Tate's Artist Rooms' Robert Mapplethorpe collection arrives at Towner.

6 Madness of a Monarch
CQ speaks to Simon Ward about the first ever tour of 'The Madness of George III.

10 Keeping Up With the Joneses
Paul Atterbury tells CQ about an artistic revolution in the garden.

12 Going Solo
CQ talks to London Philharmonic Orchestra leader Pieter Schoeman about his Eastbourne solo.

14 That's Another Nice Mess...
CQ speaks to Neil Bromley and Simon Lloyd, aka Laurel & Hardy.

16 Charleston's Small Wonder
Vanessa Gebbie speaks to CQ about the small but mighty festival.

18 For the Love of Mary
New Sussex Opera presents Vaughan Williams' first finished opera.

20 Silver Screenings
Stiff upper lips abound as the Under Ground Theatre begins a season of classic British films.

23 Journey of a Portrayal
Edie Campbell tells CQ of her struggle to bring Emily Dickinson to life.

24 A Day in the Life of... a Producer
Peter Sundby talks to CQ about setting up his own theatre company.

25 Town of Many Talents
Town Property's James Bell speaks to CQ about his amateur dramatics involvement.

26 Eastbourne Presents...
Information on events in Eastbourne.

28 Hailsham Hosts Creative Melting Pot
Hailsham plays host to its fourth annual arts festival.

29 Feast for the Eyes
Art on the River's Autumn Show at Gallery North will showcase the group's talents.

30 Presenting for Your Enjoyment...
A roundup of amateur dramatic productions in Eastbourne.



CQ Online

On Cultural Quarterly's website you can now download back issues, sign up to our e-newsletter and follow us on Facebook and Twitter.

www.culturalquarterly.co.uk



Cultural Quarterly
Autumn 2010

Contents



ISSN 1757-1138

Cultural Quarterly

A quarterly niche carving magazine dedicated to Eastbourne's flourishing cultural quarter, packed with insightful content and stunning visual appeal. CQ is distributed from various locations around Eastbourne, including the cultural quarter's venues.

*Environment aware print
Printed by Eastprint on FSC and ISO 14001
accredited paper using soya-based inks.*



© PRG Ltd, 2010

All rights reserved. Reproduction of any part of this publication is prohibited without permission. Every effort is made to ensure accuracy, but the publisher accepts no responsibility for editorial opinions or statements, and no liability for products or services described in this magazine.

The Point, College Road,
Eastbourne BN21 4JJ
Tel: 01323 646076
Fax: 01323 411050
Email: publishing@prg ltd.co.uk

Publisher: Raymond Groves
Editor: Faye Spiers
Design: Matt Sommers
Contributors: Sara Hawthorn,
Kathryn Ranger, Sarah Rajabalee
Advertising: Tracey Ledger



Pushing the Boundaries

Tate's Artist Rooms arrives at Towner in September with an exhibition of controversial photographer Robert Mapplethorpe's work.

**Artist Rooms –
Robert Mapplethorpe**
Towner
25 September–21 November

Towner will display 70 of Robert Mapplethorpe’s photographs, including his celebrity portraits, from September 25–November 21 as part of Artist Rooms, owned and managed by Tate and National Galleries of Scotland. Towner is part of Tate Connects, which supports the development of the visual arts across the UK.

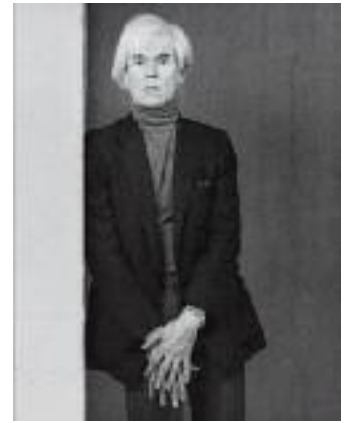
Tate Connects aims to use Tate’s resources to increase public access to its national collection of British and international modern and contemporary art. Towner is one of Tate’s 10 five-year partnerships with visual arts organisations across the UK, selected for their “artistic vision and excellent modern and contemporary programmes”.

Sanna Moore, exhibitions curator at Towner, explained: “The Robert Mapplethorpe exhibition is part of Artist Rooms, a collection of

artists themselves. “The aim of the collection is to create a new national resource of contemporary art that will be shared with museums and galleries throughout the UK so as to inspire new audiences, especially young people.”

At Towner, the exhibition will be themed into five rooms, the largest containing portraits of artists who were contemporaries of Mapplethorpe in the New York scene in the 1970s and 1980s and other famous people, including Arnold Schwarzenegger, Andy Warhol, Iggy Pop, Marianne Faithful, David Hockney, and Mapplethorpe’s friend Patti Smith. For the first time, it will also include Andy Warhol’s silkscreen portrait of Mapplethorpe alongside Mapplethorpe’s self-portraits.

It also comprises a series of black and white photographs, including 17 vintage prints signed by the artist, flower



if not notorious, in the 1970s and 1980s for his photographs of the male nude and sexually explicit gay imagery.

“With these images, he tested the right to individual freedom – they were not meant to be titillating, shocking or obscene, but beautiful in a traditionally classical way. His work therefore holds a significant place in the history of artistic struggle to depict the world as it is with honesty and truth.”

In 1988, Mapplethorpe

“I’m looking for the unexpected. I’m looking for things I’ve never seen before...”

(Left)
Grace Jones 1984
© Robert Mapplethorpe Foundation.
Used by permission.

(Above right)
Andy Warhol 1983
© Robert Mapplethorpe Foundation.
Used by permission.

ARTIST ROOMS Tate and National Galleries of Scotland. Acquired jointly through The d’Offay Donation with assistance from the National Heritage Memorial Fund and the Art Fund, 2008.

international contemporary art that has been created through one of the largest and most imaginative gifts of art ever made to museums in Britain. The gift was made by Anthony d’Offay in 2008, with the assistance of the National Heritage Memorial Fund, The Art Fund and the Scottish and British governments.

“Artist Rooms’ guiding principle is the concept of individual rooms devoted to particular artists. The collection of over 725 works includes major groups of work by seminal artists, and many of the rooms were conceived as specific installations by the

studies, portraits and several iconic self-portraits – in particular, a poignant portrait of Mapplethorpe shortly before his death from an AIDS related illness in 1989.

Sanna said: “Mapplethorpe pushed the boundaries of photography in both his subject choice and technique. This has led to him often being remembered exclusively for his controversial and often explicit images.

“However, the Artist Rooms collection of his photographs allows these ‘controversial’ works to be considered in the context of his entire oeuvre. Mapplethorpe became famous,

stated: “I don’t like that particular word ‘shocking’. I’m looking for the unexpected. I’m looking for things I’ve never seen before...I was in a position to take those pictures. I felt an obligation to do them.”

Although he is perhaps most associated with these ‘shocking’ works, Mapplethorpe also photographed more traditional subjects, such as flowers, formal portraits and classical nudes.

Sanna said: “Mapplethorpe’s understanding of form and light and his meticulous compositions create truly beautiful images that revel in the sensual quality of nature and the human body.”



Madness of a Monarch

Simon Ward has played Jesus, the devil and now a king. Filling the shoes of much-loved figures is a tiring task, but at least with *The Madness of George III* he gets to bring the show to Eastbourne's Devonshire Park Theatre, he tells CQ.

Stepping onto the stage at the Devonshire Park Theatre as a cherished monarch in the first ever tour of Alan Bennett's critically acclaimed *The Madness of George III* is daunting even for an actor of Simon Ward's calibre.

"It's the first professional tour of the play since it was premiered, which is wonderful," he said. "I'm following in the shoes of Nigel Hawthorne, who had huge success and became synonymous with the role. To try and bring whatever strengths or humour one has to the role is a big step and always leaves one feeling a bit frightened."

The tour's visit to Eastbourne seems to be something of a perk for Simon, who praises the Friends of the Devonshire Park Theatre for making his stays so enjoyable.

"I must have been there about 20 times. I love Eastbourne," Simon said. "I'm exceptionally fond of the theatre because they've got a wonderful Friends group. They raise enough money to put in a new bath and shower in the bathroom on the second floor and get backstage stuff done. The Friends have done so much and they've managed to make it not just habitable but really

rather pleasant backstage."

Presenting an iconic figure in his most difficult hours of mental deterioration is a challenge Simon could not resist.

"When I read it, I fell in love with it and felt 'I've got to do this!' You don't feel that very often in life," he said. "It's the most extraordinary tragic comedy and no one does it better than Alan Bennett. He's an astonishing writer. One of the great things about this play is they're all wonderful parts – they're all beautifully, comically delineated."

The Madness of George III is an exploration of duty and

*(Above)
Simon Ward and
Susan Penhaligon.*



Eastbourne College



Open Morning

Saturday 9 October 2010 – Tours from 9am

Drop in and see the school in action

No appointment necessary

www.eastbourne-college.co.uk

HMC Independent School – Boarding and day – Boys and girls 13 to 18
admissions@eastbourne-college.co.uk Tel. 01323 452323 Old Wish Road, Eastbourne, East Sussex BN21 4JX

FORTHCOMING MIRABELLE EVENTS



THE MIRABELLE RESTAURANT SEATS 50 AND SERVES LUNCH AND DINNER IN WONDERFULLY WARM AND INTIMATE SURROUNDINGS.

WEDNESDAY 1ST SEPTEMBER 2010

'Spice Floating' – The Mirabelle team will be joined by GB Master Chef Cyrus Indrawala, Head Chef and proprietor of the Café Spice Nuisance restaurant in London. Amongst many honours, Cyrus has been awarded an CBE in the 2010 Queen's New Year's Honours list for his services to the Hospitality Industry. Gerald and Cyrus join forces to create an Italian taste bud tantaliser - **SOLD OUT**

WEDNESDAY 6TH OCTOBER 2010

'Austrian Cuisine' – The Mirabelle Restaurant celebrates an evening of delicious Austrian fare. Gerald's classically inspired dishes are accompanied by wines from the Jirischitsch family, Langenlois, North Austria. Their fascinating

190 year wine making history will be presented by Andrea Rubeck of Avon Barrett Siegal and Zorrigli - £65.00 per person

WEDNESDAY 3RD NOVEMBER 2010

'Argentine Excellence' – Nick Ullman introduces his incredible wines from Familia Zuccardi, award winning producers from the Mendoza Valley. Perfectly accompanying Gerald's Argentine inspired menu - £65.00 per person

To make your table bookings, please contact the Reservations Department on 01323 412345



100 EDWARDS PARADE, EASTBOURNE, EAST SUSSEX, BN21 4EQ TELEPHONE: +44 (0)1323 412345, FAX: +44 (0)1323 412333

The Essence of England - www.grandseasbourne.com

Madness of a Monarch

kingship. The year is 1786 and George III is King of England. He has a loving wife (played by Susan Penhaligon), a nation of subjects, a loyal parliament, and the world kneels at his feet.

But when the king's behaviour becomes increasingly erratic and rumours circulate that he has addressed an oak tree as the King of Prussia, doctors are called in, parliament falters and the Prince Regent manoeuvres himself into power.

From curtain up, Simon's role is demanding. He said: "It's one of the best parts I've ever been asked to play. I love it so much.

"It's going to be incredibly

tiring. In the first five minutes, he's displaying the physical symptoms of his illness. Every time he goes off stage there's a costume change or some huge leap forward in his symptoms, so he exits in one stage of his condition and, when he comes back on, he's 50 times worse.

"I think it's accepted that it was porphyria that he had, which is a malfunction of the haemoglobin cells in the blood – he went from great excitement to deep despair."

George's likable character helps Simon connect with the role. "Everyone was terribly fond of the king, which is one of the reasons the story is so

poignant," said Simon. "The people in the streets wanted to know what was wrong with the king, and if he was better. If he was better there was joy and happiness in the land, if he was worse they were gloomy."

He knows well that some iconic figures are far easier to play than others, stating: "Well, I've already been Jesus and I've been the devil in a film with Kirk Douglas. The devil wasn't such hard work as Jesus, because that was in the York Mystery Plays. To be crucified eight times a week in front of 3,500 people in the open air in early June at midnight in Yorkshire is quite tricky."

The Madness Of George III

Devonshire Park Theatre

4–11 September

"I'm exceptionally fond of the theatre because they've got a wonderful Friends group"





Keeping Up With the Joneses

Homes for living in, gardens for enjoying – it seems a simple idea in 2010. But the concept arrived by way of an artistic revolution, as historian Paul Atterbury tells CQ.

Country houses at commutable distances from cities, and outside spaces that offered a touch of nature rather than untouchable floral borders – at the end of the 19th century, these were as controversial as new catwalk styles or modern building designs are today.

Designer and horticulturalist Gertrude Jekyll and architect Sir Edwin Lutyens, a leading 20th century British architect known for imaginatively adapting traditional architectural styles to the requirements of his era, broke the mould. Antiques Roadshow regular Paul Atterbury will shed light on their working relationship in a talk at the Winter Garden in September.

Paul said: “These are two people whose attitudes and creativity helped shape the world we live in today. What emerged at the end of the 19th

century was the first take on suburban living, the heyday of living in our own way. The sense that you can live in a town but also live in the country was very much a concept of that period.

“Being able to live surrounded by nature but be able to commute to the city, with the improving transport links, in semi detached houses. It’s how a lot of people still choose to live now.”

Eastbourne is one town where the topic of Jekyll’s contribution to contemporary style could still spark some controversy.

“The corporation gardens – the colours and the regimented patterns – were exactly what Jekyll was objecting to,” Paul said. “What she was saying was, actually we don’t need to do that. She was about informal planting and getting away from the colour and structure that had been used before.”

These precise gardens – known as corporate or carpet – remain the centrepiece of Eastbourne’s promenade. For every contrast to the pair’s work that can be found in Eastbourne – from well-preserved historic buildings to carefully trimmed hedgerows – there are also pure examples nearby. An open house in Rye boasts Lutyens work, while Jekyll’s home county of Surrey commemorates her with a museum.

Paul said: “Lutyens was an architect whose clients were largely in the south of Britain. They had successful careers and wanted to commute to London for work but they wanted the lifestyle of living outside in a Lutyens house.

“He was about informality in style and structure, not being tied to an era. Whether you were living in a suburb or in the city, you were pursuing a lifestyle. Eastbourne has some examples

(Above)
Great Dixter House & Gardens
near Rye, restored by Lutyens.
Photo by Aaron Bertelsen.

(Right)
Paul Atterbury.

**Paul Atterbury –
Lutyens and Jekyll**
Winter Garden Gold Room
28 September

of houses that offered this.”
Lutyens and Jekyll worked throughout the world. He became known internationally as the ‘Great British architect’, having worked on the creation of New Delhi, and was one of the three principle architects appointed to create the Cenotaph in Whitehall. She created over 400 gardens in the UK, Europe and America.

The Lutyens-Jekyll garden overflowed with hardy shrubbery and herbaceous plantings within the firmly classic architecture of stairs and balustraded terraces. This fusion of the formal with the informal allowed for brick paths and slightly overhung herbaceous borders full of lilies, lupins, delphiniums and lavender – the softness was a sharp contrast to the look of the Victorian era and it defined the English garden until modern times.



The leaps in attitude towards gardening were about more than colour and shape.

Paul said: “This was the beginning of our fascination with gardening. It was Jekyll who got this going. The garden becomes part of the house, an outdoor living space.”

Ahead of their time in more ways than one, their fame was aided by the magazine trade. Country Life magazine featured articles from Jekyll and features on Lutyens, whose work was favoured by the editor; they could be seen as the root of the coffee table magazine culture.

Their creativity gave the new magazine movement ideas for their own homes at a time when do-it-yourself was in its infancy.

Paul said: “It then became more about ‘do-it-yourself’, about creating a domestic space outdoors. Jekyll wrote books and articles that spelt out in quite simple terms how to do it. At the same time, she launched the fantasy gardens – just as today you might get people who sit in bed reading cookery books but who never get into the kitchen, her books allowed people to fantasise about a lifestyle.”

Hydro Hotel



Mount Road • Eastbourne • BN20 7HZ • Telephone 01323 720643
Email: sales.office@hydrohotel.com Web: www.hydrohotel.com



The Hydro is the perfect choice for all occasions and has a number of venues to suit all parties.



The Crystal Restaurant is open daily for Traditional Lunch & Dinner.



We are now taking bookings for our Christmas Festivities.

- 3 Course Pre-Christmas Luncheon
- Private Festive Lunch and Dinner
- Pre-Christmas Disco Party Nights
- Pre-Christmas Murder Mystery and Opera Dinners

For more details contact our sales team on
01323 746105



The Cheque is out
New Fine Dining Restaurant
and is open for Dinner
Tuesday - Saturday
Bookings Essential!



MORNING COFFEE • LIGHT LUNCHEONS • SALAD BAR • AFTERNOON TEAS
LUNCHEONS • DINNERS • WEDDINGS • CELEBRATIONS • PRIVATE PARTIES



Going Solo

CQ talks to violinist Pieter Schoeman, leader of the London Philharmonic Orchestra, about the ensemble's residency in Eastbourne and soloing in Brahms' Double Concerto in the UK for the first time.

The London Philharmonic Orchestra (LPO) has been visiting Eastbourne's Congress Theatre for 14 years, and its concerts are growing ever more popular in the town. Orchestra leader Pieter Schoeman says they regularly play to full houses.

He said: "I quite often lead the orchestra in Eastbourne, and have played there many times in the last eight years. We're very excited that the attendance level over the last few years for our concerts at Eastbourne has risen enormously, and we play to really full halls, which is wonderful."

The leader of an orchestra is the lead violinist and the right hand man of the conductor, sitting next to the conductor and tuning the orchestra among other duties. However, Pieter will play the violin solo in Brahms' Double Concerto for violin and cello on October 3.

He said: "I will be the violin soloist, which I do in my spare time. It's not how I make my living – my job is leader of the LPO – but in my free time I do a certain amount of solo playing during the year, as most leaders would do.

"Our principle cellist Kristina Blaumane will play the solo

cello part. When we play a solo with the orchestra, we don't actually play in the rest of the concert, so I will only be playing in the Brahms. It's a huge piece – as concertos go for violin and cello, it's the biggest one there is. Even compared to violin concertos, it's as difficult as any of them.

"It's a very complex piece, technically and musically. It's a fantastic piece – since I was a young boy, it was always my dream to play it. I have played it several times in South Africa, which is my native country, but never in the UK, so I'm very excited about that."

*(Above)
Pieter Schoeman.*

*(Right)
London Philharmonic Orchestra.*

London Philharmonic Orchestra
 Congress Theatre
 3 October

Pieter made his debut at just 10 years old in South Africa, although he doesn't come from a musical background.

He said: "My family is mathematical, not musical – it's by pure chance that I ended up in music. I was lucky that I came from a country with a small musical community and had many chances from a young age to solo with orchestra.

"When I got to university level in America, I was surprised to find that many of my colleagues didn't have nearly as many opportunities to solo with orchestra as I had because I came from South Africa."

As well as residencies in Eastbourne and Festival Hall in London, where the orchestra is based, the orchestra also spends May to August at Glyndebourne and tours all over the world.

Pieter said: "We tour extensively. During the last



season, we spent more than 60 days abroad in Australia, America and all over Europe, and just in the first half of September we're going to Helsinki, Berlin, Minsk, and Seoul in Korea.

"We also spend four months of the year at Glyndebourne, and we still play concerts in London during that time. The principles also play chamber music in the Wigmore Hall in Cambridge and solo concertos and so forth."

Peter led the orchestra when

the LPO recorded the soundtrack for the Lord Of The Rings film trilogy.

He said: "It was a huge project – it took several weeks. It's completely different from performing live, musically and technically. It's easy to play but it has to be so absolutely perfect. I think they calculated that we recorded seven minutes per session, so that gives you an idea of how picky they were. It was quite a groundbreaking experience for everyone involved."

Creative Apprenticeships now available through Sussex Downs College

Sussex Downs College is the only approved provider in the South East offering all six Creative Apprenticeship Pathways:

- Creative Apprenticeship in Live Events & Promotion
- Creative Apprenticeship in Cultural & Heritage Venue Operations
- Creative Apprenticeship in Music Business
- Creative Apprenticeship in Technical Theatre (Rigging, Lighting and Sound)
- Creative Apprenticeship in Costume & Wardrobe
- Creative Apprenticeship in Community Arts

The Creative Apprenticeships programme is designed to meet the needs of the creative and cultural sectors. Approved by industry and supported by Government, the qualifications give candidates flexible work-based learning opportunities where they can learn valuable skills and obtain qualifications (GCSE or A-level equivalent) whilst earning a wage.

These qualifications consist of

- National Award
- Certificate in Creative & Cultural Practices
- Key Skills

Eligible candidates must be:

- Aged 16-24 years old
- Employed for a minimum of 16 hours per week
- Funding may be available for 16-18 year olds

For further information contact

Rose Miller, Lead Skills Adviser,
 Employer Training, Sussex Downs College,
 Telephone: 01273 402211
 Email: rosemary.miller@sussexdowns.ac.uk
 web site: www.sussexdowns.ac.uk/training





That's Another Nice Mess...

CQ speaks to Neil Bromley and Simon Lloyd, aka Laurel & Hardy, about playing the legendary duo in Tom McGrath's unconventional play.

In their trailblazing career as movies' best-loved double act, Stan Laurel and Oliver Hardy appeared in over 100 films and their influence is clear even today. Tom McGrath's play *Laurel & Hardy*, appearing at the Devonshire Park Theatre on September 30–November 2, reveals some surprising facts about the duo, including that a canny film producer engineered their long-running partnership.

CQ spoke to Neil Bromley, who plays Stan Laurel, and Simon Lloyd, who plays Oliver Hardy, about portraying the well-known comedians. They were both introduced to the pair at an early age.

Neil said: "I've always been a fan. I used to love to watch them on TV – teatime after school on BBC2 before *Monkee!* There is something so gentle and decent about these

two clowns, trying to do their best to make their way in the world before inevitably upsetting someone and messing things up."

Simon agrees: "We both grew up with the pair. They were on television a lot more than they are now. I remember my dad taking my brother and myself along to the rolling news theatres in London, which were interspersed with twenty-minute shorts of Laurel & Hardy. This was in the mid-'70s and unfortunately those picture houses are long gone now. Fond memories."

Tom McGrath's play is no conventional tribute. Stan and Ollie, now dead, linger in a limbo-like waiting room where they spend their time in nostalgic banter about the old days, bickering and making up, swapping gags and re-enacting some of their most memorable comedy routines. The show is

punctuated by comically surreal moments through which the pair eventually learn to let go of earthly concerns and move on to enjoy their well-deserved immortality.

Neil and Simon did extensive research for their roles.

Simon said: "Research was very important, although pretty much everything was there for us in the script. We relied a lot on a book called *The Laurel & Hardy Dictionary*, which covered every aspect of their careers and people who worked with them – a fantastic publication. I also read a very good book on their early lives called *Stan And Ollie – The Roots Of Comedy*; if you're a fan, it's definitely worth a look."

Neil said: "I also read a terrific biography by John McCabe called *Mr Laurel & Mr Hardy*. Philip Dart, our director, made sure we revisited plenty of their movies,

(Above)
L–R: Neil Bromley and
Simon Lloyd.

Laurel & Hardy
 Devonshire Park Theatre
 30 September–2 November

particularly the ones with routines we were learning for the show.”

Both actors seem confident in the script and their interpretations of Laurel and Hardy, unfazed by the fame of the characters they’ll portray.

Neil said: “With a totally fictional character, you have more freedom to interpret. So you’re on a tighter rein as an actor when you’re dealing with someone that everybody knows. On the plus side, it’s nice to have the films and footage of Stan and Ollie as a source to get the details and idiosyncrasies right.”

Simon agrees: “You still have to endeavour to get it right – a believable portrayal of someone completely new you lift off the pages of a fresh script, something you create through the rehearsal process with your fellow actors and director. The only difference with a real



person is that everything is already there for you and it is your job to be very specific when creating that character for yourself and an audience. I hope we’ve both managed it here with such recognisable and loved movie legends.”

Both Simon and Neil have come to admire and respect Stan and Ollie all the more for standing in their shoes.

Simon said: “The more you know about someone and understand them, the more you empathise. Before embarking on

this show, they were to me two famous black and white comedians from the early film era, but now, when I watch any of their films or read anything about them, I feel intrinsically linked to their backgrounds and what they achieved as artists, performers and individuals, wonderfully brilliant clowns. Like any actor, there is always a certain amount of insecurity in what you are trying to achieve and constantly pushing to improve on what you are doing, to get it right. I know this was the case with Ollie, and it’s something that I strive to do myself.”

Neil said: “I just love and admire them even more because they worked with such precision and skill and they made it look so easy. Stan was an amazing performer. Buster Keaton said at his funeral, ‘don’t let anyone fool you – I wasn’t the greatest, Chaplin wasn’t the greatest; Stan Laurel was the greatest’.”

The Largest Fireplace, Fire and Stove Specialist in East Sussex



- 120 working displays
- Up to 95% efficient fires
- Contemporary or traditional
- Wood, Stone or marble
- Full installation service

- Free home survey in local area
- Free on site parking
- Extensive 3000sq ft showroom



Units B2 & B3
 Chaucer Business Park
 Dittons Road
 Polegate BN26 6JF

01323 488848

www.sussexfireplacegallery.com



Charleston's Small Wonder

Small but mighty best describes the Small Wonder short story festival, held each September at Charleston. CQ talks to first time speaker Lewes based writer Vanessa Gebbie.

Dedicated to short story fiction, Charleston's Small Wonder Festival on September 23–26 will include dramatisations, readings and workshops from widely published authors and homegrown talent.

Vanessa Gebbie, based in Lewes and the author of an award-winning collection of short stories and the highly praised *Guide To The Art Of The Short Story*, will be speaking at the festival for the first time this year.

She said: "I've been going to the Small Wonder Festival for the past few years so I'm thrilled to have been asked to speak. It was really the first big festival to put the short story on the map, to attract the big writers, and we are just incredibly lucky to have it on the doorstep here in Sussex."

The short story has had a resurgence of popularity.

However, Vanessa believes that, for writers, its appeal never really diminished.

"From a writer's point of view, the short story never went away. It's one of the most challenging things to write – getting a short story technically correct is actually very hard. People say that short stories are a training ground for novelists, but nothing could be further from the truth. It's like one is a sprinter and one is a marathon runner – the two are so different."

In 2006, Vanessa won Small Wonder's Slam competition, which sees writers picked at random to read out a piece of their short fiction based on a theme in a strict time limit of three minutes.

"The competition is done so well, it's such a fabulous atmosphere. It's fast and furious, but friendly, and it was a big stepping-stone for me. We

all get a bit precious about this thing called writing, and it brings it down to a fun level."

Despite the Small Wonder Festival growing in reputation within the literary world, and here in Sussex, Vanessa is keen to illustrate its importance to a wider audience.

"It is quite a magical event and held in the most beautiful place. It's inclusive and it's welcoming, and you're in the company of writers and readers – it is just a lovely thing to do. Even if you can't go for the whole weekend, there is so much to appeal to different sensibilities and interests."

This year's festival will include workshops from Hari Kunzru and Stella Duffy, and Alexei Sayle will discuss whether the digital age is making the book obsolete.

Vanessa's newest collection of short stories *Storm Warning* will be published in November.

Small Wonder Festival
Charleston
23–26 September

(Above left)
Photo by Axel Hesslenberg.

(Above right)
Vanessa Gebbie.



Invitation

We would like to offer you
a **FREE**, no obligation market
appraisal of your home.

Town Property
15 Cornfield Road, Eastbourne,
East Sussex BN21 4QD
Tel: 01323 412200 www.town-property.com

**Ingham
House**



Ingham Social Centre

Ingham Social Centre is an independent community resource specifically for the over 60s on a non-residential basis. The centre is managed by an Occupational Therapist, a Registered Health Care Professional

The Centre provides an opportunity to meet people and to participate in a range of social and recreational activities.

We can help you apply for full funding (whether or not you are receiving Home Care already).

For further information and details of our weekly programme, call Lynn.

Ingham Social Centre
69 Carlisle Road, Eastbourne BN20 7EJ
Tel: 01323 734009/736936
lynn@inghamhouse.co.uk

Ingham House is a member of the Residential Care Homes Association.



For the Love of Mary

New Sussex Opera will perform Vaughan Williams' modern romantic ballad opera *Hugh The Drover* with a children's chorus drawn from Sussex primary schools in November.

New Sussex Opera (NSO) will present Vaughan Williams' first completed opera on November 21 at the Devonshire Park Theatre. Romantic ballad opera *Hugh The Drover*, which premiered in 1924, is set in the Cotswolds in 1812 during the Napoleonic Wars and centres on a prize fight to win the hand of the beautiful Mary, a fight that divides a tightly knit community.

David James, general director of New Sussex Opera, said: "This radiantly lyrical work is rich in the English folk music idiom that was so dear to Vaughan Williams. The community element of *Hugh The Drover* makes this piece an ideal vehicle for the chorus and company of New Sussex Opera.

"We are delighted that this year we are able to return to the Devonshire Park Theatre, which we have found a most

attractive and intimate venue for opera in past seasons."

New Sussex Opera will also perform *Hugh The Drover* at The Stag Theatre, Sevenoaks, on November 18; Cadogan Hall, London on November 24; Connaught Theatre, Worthing, on November 25, and Lewes Town Hall on November 28.

The performance will feature a children's chorus drawn from a number of Sussex primary schools following a series of workshops for schools.

David said: "One important aim was inspiring children to sing, including basic vocal technique, warm-ups and games, and a range of different styles of music for the group to learn and perform."

The cast will be led by tenor Daniel Norman as Hugh, who has recently performed roles for English National Opera, the Royal Opera House and Garsington Opera. The role of

Hugh's rival John The Butcher is taken by baritone Simon Thorpe, Welsh National Opera's current Kothner and Scarpia. Mary, the object of their affections, is performed by Australian soprano Celeste Lazarenko, fresh from debuts with Angers-Nantes, Rennes and Dijon Operas. Clarissa Meek, William R Allenby and Grant Doyle also star.

NSO musical director Nicholas Jenkins will conduct, and the production will be directed by director of productions Michael Moxam, and designed by Yann Seabra.

Last year, New Sussex Opera performed the British premiere of the complete version of Offenbach's *The Rhine Fairies*, the company's fourth British premiere, and produced Vaughan Williams' *The Poisoned Kiss* in 2008 to great success.

David said: "We find things to do that are a bit off the beaten track."

Hugh The Drover
Devonshire Park Theatre
21 November

(Above)
L-R: David Norman,
Celeste Lazarenko and
Simon Thorpe.

**We've got Christmas
all wrapped up!**



Festive lunches & dinners:

Enjoy a festive luncheon or dinner,
whether your group is just 2 or 120!
Lunch Menu £15.95 per person
Dinner Menu £24.95 per person
3 courses including crackers
and table decorations
Available 1st -
23rd December 2010

Christmas Party Nights

Dates available for the 2010 festive
season - Join a party night or enjoy
private use of the venue
Price: £27.95 per person
includes 3 course dinner,
disco, festive decorations
and crackers.

theStar  Alfriston

To book or enquire: 01323 870495
High Street, Alfriston, East Sussex BN26 51A
bookings@thestaralfriston.co.uk | www.thestaralfriston.co.uk

THAI VILLAGE



29b & 29c Church Street, Willingdon, Eastbourne, East Sussex BN20 9HR

Tel: 01323 505333 • www.thaivillage.co.uk

Open Tues - Sun, 12 - 2.45pm & 6 - 10.30pm (Closed Mondays)

EASTBOURNE
Wedding Fair

EASTBOURNE WINTER GARDEN
Saturday 8th and Sunday 9th January 2011

The largest Wedding Fair in East Sussex. Sponsored by
Eastbourne Borough Council and One Stop Wedding
Shop Eastbourne. Showcasing carefully selected
suppliers with all the inspiration you need for
the Bride and Groom's special day.

Over 140 exhibitors, three fashion shows each day,
and some very special attractions you will not want to miss!

Visit www.eastbourneweddingfair.co.uk
or telephone 01323 645937





Silver Screenings

In September, Sunday afternoons will be all about stiff upper lips and tea and cake as the Under Ground Theatre begins a season of classic British films.

This autumn, the Under Ground Theatre will commence a season of classic films, beginning on September 19 with *The Browning Version*, made in 1951 and starring Michael Redgrave and Jean Kent.

Roger Motton, vice chair of Eastbourne Arts Centre (EAC), based at the Under Ground Theatre, said: "We had a state of the art projector and screen installed in 2009 and, having trialled a classic film show with our members, we felt that it would be an exciting addition to our repertoire. We plan to have our monthly film show as a Sunday matinee from September through to April.

"Once you start showing films to a paying audience, you obviously need to satisfy the appropriate licensing conditions. There are a number of commercial film libraries where the hire includes the

licence fee but, in the end, we decided to join the British Film Institute and take advantage of their extensive catalogue of predominantly British films."

Based on the Terence Rattigan play, *The Browning Version* follows an ageing public school teacher in his last days before retirement as he comes to terms with his failure as a teacher, his wife's infidelity and the realisation that both pupils and staff despise him. However, an unexpected parting gift by a pupil marks an emotional turning point.

Roger chose the films for the season. He said: "At the EAC, we have a coordinator for each of the various arts genres – jazz, drama, variety, chamber music, and now film. As film showings were my suggestion, I was asked to act as coordinator, which is great for me as I'm a bit of a film buff. The selection of films is restricted to those on

the BFI catalogue.

"For this first season, I chose films that I think will have a wide appeal. In addition, we thought we would attempt to make a social occasion out of it by serving tea and cake after the film. This will allow members of the audience to chat to fellow filmgoers in a relaxed and friendly atmosphere."

The season will also include *Pygmalion*, the 1938 forerunner of *My Fair Lady* starring Wendy Hiller as Eliza Doolittle and Leslie Howard as Henry Higgins, on October 17, and *The Seventh Veil* starring James Mason and Herbert Lom on November 21.

Roger says he is happy to hear suggestions for the rest of the season: "It's difficult to fulfil everyone's wish list of films, but I shall be at the film shows and am quite happy to hear individual requests."

The Browning Version
Under Ground Theatre
19 September

(Above)
Wilfrid Hyde White and
Michael Redgrave in
The Browning Version.



Cinderella

Register to receive CQ's e-newsletter by November 5 and be entered into a prize draw to win lunch for two at the Thai House, or two tickets to Eastbourne's pantomime Cinderella.

Email your name, address and telephone number (so we can let you know if you've won) to faye@prgltd.co.uk with the subject heading 'CQ competition'.

You can keep up to date on Eastbourne's artistic and theatrical events from your home with an annual subscription to Cultural Quarterly. Send us a cheque made payable to PRG Ltd for £10, along with your name, address, telephone number and email address, to receive four stunning issues as they are published and be entered into the prize draw.

Send to: Cultural Quarterly, PRG Ltd, The Point, College Road, Eastbourne BN21 4JJ.

Register & Win!



The Thai House

You can pick up a free copy of Cultural Quarterly at any of the following outlets:

Berkeley Homes, *King Edwards Parade*
Chatsworth Hotel, *Royal Parade*
Congress Theatre, *Carlisle Road*
Devonshire Park Theatre, *Compton Street*
Eastbourne Library, *Grove Road*
Enterprise Centre, *Station Parade*
Fitness First, *The Crumbles*
Grand Hotel, *King Edwards Parade*
Hydro Hotel, *Mount Road*
Langham Hotel, *Royal Parade*
Nigel Greaves Gallery, *Compton Street*
Plantations Coffee Shop, *Carlisle Road*
Tourist Information Centre, *Cornfield Road*
Town Hall, *Grove Road*
Towner, *Carlisle Road*
W Bruford, *Cornfield Road*
Waitrose, *High Street*

PRG Ltd and associated companies may use your information to contact you for marketing purposes. By including your email and telephone numbers you are agreeing that they may be used for this purpose. Please indicate if you do not wish to receive information from PRG Ltd and its associated companies in your response.



Journey of a Portrayal

After 14 years of planning, panic attacks and the death of her father, Edie Campbell tells CQ of her struggle to bring the written words of her dead heroine to life.

**Emily Dickinson & I:
The Journey Of A Portrayal**
Lamb Theatre
26 September

(Above)
Edie Campbell.

Edie Campbell's play *Emily Dickinson & I: The Journey Of A Portrayal* at the Lamb Theatre in September focuses on the relationship between a dead poet and her living admirer, separated by a continent and a century. As Edie's life unfolds on stage, so does the life of Emily Dickinson.

During senior school, Edie picked up a poetry book by the American recluse, who was unknown to her at the time. She instantly fell in love with Dickinson's writing.

After trying unsuccessfully to write a play about her heroine at university, Edie put it on hold. It wasn't until the death of her father in 1995 that she revisited the idea.

Edie said: "That year was a turning point for me. My dad died of Alzheimer's and I had to make the decision of whether to do the play or give

up. Emily had been, and still is, a huge part of my life. The writings of Emily spoke to me with a level of intensity, and she was able to put into words the feelings that I felt."

It was only when Edie met co-writer and partner Jack Lynch in Iowa, where they were working as actors, that the current format was developed. He suggested that she intertwine her own story with Emily. Unhappy in the US, they moved back to the England and started to create their own plays, beginning with *Emily Dickinson*.

Edie said: "That's when I decided to do it Jack's way. It was scary at first. Jack forced me to do improvisation, which I'm not very good at, then asked me to tell him a story about my father that then referred back to Emily and her writing."

Edie felt her life had several parallels to Dickinson's, who

was renowned for her poetry style and self-imposed seclusion, and turned to Emily's letters for comfort when her father passed away.

"Both my and Emily's fathers shared similar characteristics and I found comfort in her letters," said Edie. "I did similar things like forgetting what I had done, and doing daft things like putting the teapot in the fridge. In the play, where I talk about my father's death, I took excerpts from her letters and poems so that Emily could speak for herself.

"Emily was able to distil the essence of feelings, whether it's joy, pain, fear or death, and crystallise them into a few words. She was also forward thinking when it came to grammar and form using dashes, inconsistent punctuation and developing her own style."



A Day in the Life of... a Producer

Peter Sundby talks to CQ about setting up his own theatre company, and starring in its first production *The Open Couple*.

Peter Sundby has a lot on his plate. Having set up his own production company, he is still looking for other work as an actor and working as a plumber on the side.

When he spoke to CQ, Peter had just come from a plumbing job and was off to the technical rehearsal for Straight Up Theatre's production of *The Open Couple* for Camden Fringe Festival.

Peter said: "I went to drama school when I was young and was a child actor until I was about 12. Then we moved to Eastbourne, and I eventually trained as a plumber and taught at ECAT, as it was then.

"About eight years ago, I went back to drama school. I've had a reasonable amount of success as an actor, but I do as much plumbing as acting. It makes it sometimes feel hard to say I'm an actor."

Peter created Straight Up

Productions for this year's Camden Fringe Festival. He chose *The Open Couple* by Italian playwright Dario Fo, based on Fo's tempestuous relationship with his wife Franca Rame, as the company's first production.

Peter said: "It's an intimate play, a two hander with the couple in their sitting room. The husband is an adulterer and the wife feels driven to suicide. He wants an open marriage and it follows their discussions, which are very heartfelt and extremely funny. I like that the actors address the audience directly."

Peter asked Martina Moss-Clarke, whom he met at Brighton's Academy of Creative Training and who grew up in Hailsham, to play the role of the wife, and employed Aaron Swartz to direct.

Peter said: "Producing has been stressful and expensive.

You formulate an idea and then have to let it go. The director obviously has his own ideas about the play, and everything's a compromise. You also have a responsibility to the writer to do a good job."

Peter volunteers for Hailsham Community College's youth theatre group and was able to use its drama studio for early rehearsals. The show premiered at ZuStudios in Lewes and appeared at the Under Ground Theatre in August. Peter hopes that the play will be picked up by a theatre in London.

He said: "The potential for making money is slim, but I'm happy if it's artistically successful. If we don't get any interest at the festival, we may look for local dates and become a regional touring company. I like the idea of *The Dumb Waiter* by Pinter next as it's also a one act two hander."

*(Above)
Martina Moss-Clarke and
Peter Sundby rehearse
The Open Couple.*



Town of Many Talents

Town Property's James Bell speaks to CQ about his involvement in Eastbourne's amateur dramatics and the estate agent's generous support.

(Above)
James Bell in *The Producers*
and outside Town Property.

From selling houses to performing on stage, Town Property's James Bell is a man of many talents. He became involved in Eastbourne's amateur dramatic scene at Ratton School in 1982 when he appeared in his first production *Smike*, based on Charles Dickens' comic novel *Nicholas Nickleby*. It was this first performance that got James hooked on drama and, from that moment on, it came to play a significant part in his life.

Two years later, James got together with a group of ex-Ratton pupils and his drama teacher Mark Adams and performed in a 24-hour play reading to raise money to fund a show in Eastbourne's smallest theatre the Tivoli. The show, Sandy Wilson's *The Boy Friend*, drummed up amazing support from the audience and started the ball rolling for Eastbourne's amateur dramatics society



the Rattonians.

"I feel quite privileged to have been one of the original Rattonians," said James. "Then we were just a group of 20 but, today, the society has grown to 100 members plus, and includes a youth group, encouraging budding young actors and actresses."

James' involvement in local amateur dramatics doesn't stop at the Rattonians. Eastbourne Operatic & Dramatic Society (EODS) has been entertaining Sussex for over 100 years with much loved musicals and open air Shakespeare, and James has often been cast in leading roles,

including Nathan Detroit in *Guys & Dolls*.

Because of James, Town Property is known by many as the 'amateur dramatics estate agents', which has its benefits.

James said: "When my fellow society members are looking to sell a property, they know exactly where to come. At the moment, one of the Rattonian's is selling their house through Town and we're also marketing a bungalow for a member of EODS."

James' charisma and enthusiasm has also gained the societies the backing of Town's owners Paul and Judith Denness.

"Paul and Judith are generous supporters and, along with my other work colleagues, attend the majority of my performances. Town has displayed posters in its windows, advertised in show programmes and distributed leaflets through its mailshots, all in an effort to promote the town's local talent."

Eastbourne Presents...

FROCKART

DA VINCI EASTBOURNE
Mon 2 August–Sat 30 October,
10.00am

CHITTY CHITTY BANG BANG

CONGRESS THEATRE
Wed 18 August–Sat 4 September,
Mon 7.00pm, Tue–Sat 7.30pm
Thu & Sat Mat 2.30pm

LITA ROZA GLAMOUR

WINTER GARDEN – FLORAL HALL
Fri 3 September, 2.30pm

TRIO FANTASIA

WINTER GARDEN – GOLD ROOM
Fri 3 September, 7.30pm

OPEN DAY

UNDER GROUND THEATRE
Sat 4 September, 10.00am

FRANCIS RAYNER

PIANO RECITAL
UNDER GROUND THEATRE
Sat 4 September, 7.30pm

THE MADNESS OF GEORGE III

DEVONSHIRE PARK THEATRE
Sat 4–Sat 11 September, 7.45pm
Wed & Sat Mat 2.30pm
See page 6

A CELEBRATION OF FLANDERS & SWANN

UNDER GROUND THEATRE
Sun 5 September, 3.00pm

FOTT – PIANIST RONAN MAGILL

WINTER GARDEN – GOLD ROOM
Tue 7 September, 7.30pm

BERWICK MURALS WALK

CHARLESTON
Wed 8 September, 10.00am

AN EVENING WITH BLAKE

CONGRESS THEATRE
Fri 10 September, 7.30pm

MOUNTAIN FIREWORK COMPANY

UNDER GROUND THEATRE
Fri 10 September, 8.00pm

BLACK STRAP MOLASSES

UNDER GROUND THEATRE
Sat 11 September, 10.00am

DAVID BENSON SINGS NOEL COWARD

LAMB THEATRE
Sun 12 September, 3.00pm

THE CONFETTI MAKER

UNDER GROUND THEATRE
Sun 12 September, 7.30pm

EASTBOURNE STAGERS PRESENTS

SUMMER HOLIDAY
DEVONSHIRE PARK THEATRE
Tue 14–Sat 18 September, 7.30pm
Sat Mat 2.30pm

WALKING WARDROBE FASHION SHOW

WINTER GARDEN
Wed 15 September, 7.00pm

SIMON WOOLF ALL-STAR JAZZ SEXTET

UNDER GROUND THEATRE
Fri 17 September, 8.00pm

SCREAMING BLUE MURDER COMEDY CLUB

WINTER GARDEN – FLORAL HALL
Fri 17 September, 8.00pm

ART BY JOAN PAYNE & JACKIE STEGGALL

UNDER GROUND THEATRE
Sat 18 September, 10.00am

THE BROWNING VERSION

UNDER GROUND THEATRE
Sun 19 September, 2.30pm
See page 20

UP 'N' UNDER

DEVONSHIRE PARK THEATRE
Mon 20–Sat 25 September, 7.45pm
Wed & Sat Mat 2.30pm

VICTORIAN FESTIVAL TEA DANCE

WINTER GARDEN – FLORAL HALL
Tue 21 September, 2.00pm

SMALL WONDER FESTIVAL

CHARLESTON
Thu 23–Sun 26 September
See page 14

EVERGREEN SINGERS

UNDER GROUND THEATRE
Sat 25 September, 10.00am

ARTIST ROOMS – ROBERT MAPPLETHORPE

Towner
25 September–21 November
See page 4

EMILY DICKINSON & I: THE JOURNEY OF A PORTRAYAL

LAMB THEATRE
Sun 26 September, 3.00pm
See page 23

FOTT – PAUL ATTERBURY ON LUTYENS & JEKYLL

WINTER GARDEN –
GOLD ROOM
Tue 28 September, 7.30pm
See page 10

LAUREL & HARDY

DEVONSHIRE PARK THEATRE
Thu 30 September–
Sat 2 October, 7.45pm
Sat Mat 2.30pm
See page 14

GOLDEN AGE OF THE BALLET RUSSES

CHARLESTON
Fri 1 October, 10.30am

JOE STILGOE TRIO

UNDER GROUND THEATRE
Fri 1 October, 8.00pm

CARICATURES BY IAN PARRATT

UNDER GROUND THEATRE
Sat 2 October, 10.00am

I'M A MINGER

UNDER GROUND THEATRE
Sat 2 October, 7.30pm

LONDON PHILHARMONIC ORCHESTRA

CONGRESS THEATRE
Sun 3 October, 3.00pm
See page 12

DREAMBOATS & PETTICOATS

CONGRESS THEATRE
Mon 4–Sat 9 October, 7.30pm
Thu & Sat Mat 2.30pm

FOTT – ROY HUNT

CONGRESS SUITE
Tue 5 October, 7.30pm

TEACHERS

DEVONSHIRE PARK THEATRE
Tue 5–Sat 9 October, 7.45pm
Wed & Sat Mat 2.30pm

DUNCAN GRANT'S PORTRAITS OF VANESSA BELL

CHARLESTON
Thu 7 October, 6.30pm

BLOODY POETRY

UNDER GROUND THEATRE
Thu 7 October, 7.30pm

BLUE SHIFT JAZZ BAND

UNDER GROUND THEATRE
Sat 9 October, 10.00am

DON GIOVANNI

GLYNDEBOURNE
Sat 9 & 16 October, 4.00pm
Mon 11, Fri 22, Mon 25 & Thu 28
October, 6.30pm

BARNSTORMERS STAND-UP COMEDY

UNDER GROUND THEATRE
Sat 9 October, 8.00pm

JUS' LIKE THAT!

LAMB THEATRE
Sun 10 October, 3.00pm

PIANO RECITAL: ALEKSANDER SZRAM

UNDER GROUND THEATRE
Sun 10 October, 3.00pm

LA CENERENTOLA

GLYNDEBOURNE
Sun 10, 24 & 30 October, 4.00pm
Thu 14, Tue 19, Wed 27 October,
7.00pm

PUNK ROCK

DEVONSHIRE PARK THEATRE
Tue 12–Sat 16 October, 7.45pm
Wed & Sat Mat 2.30pm

ARMSTRONG & MILLER

CONGRESS THEATRE
Wed 13 October, 8.00pm

ART BY MARY McMANUS, JOAN PUDDEFOOT & JACKIE STEGGALL

UNDER GROUND THEATRE
Sat 16 October, 10.00am

To book tickets:

Charleston **01323 811626** www.charleston.org.uk

Congress Theatre, Devonshire Park Theatre & Winter Garden **01323 412000** www.eastbournetheatres.co.uk

Glyndebourne **01273 813813** www.glyndebourne.com

Friends of the Towner (FOTT) **01323 731607** www.friendsofthetowner.org.uk

Lamb Theatre **01323 720545** www.thelambtheatre.co.uk

Under Ground Theatre **01323 737677** www.undergroundtheatre.org.uk

SHADES OF SONG & DANCE

UNDER GROUND THEATRE

Sat 16 October, 8.00pm

PYGMALION

UNDER GROUND THEATRE

Sun 17 October, 2.30pm

MY DARLING

LAMB THEATRE

Sun 17 October, 3.00pm

HOUSE OF GHOSTS

DEVONSHIRE PARK THEATRE

Mon 18–Sat 23 October, 7.45pm

Wed & Sat Mat 2.30pm

LEVEL 42

CONGRESS THEATRE

Tue 19 October, 7.30pm

PAM AYRES

CONGRESS THEATRE

Wed 20 October, 7.30pm

MARINA & THE DIAMONDS

WINTER GARDEN – FLORAL HALL

Thu 21 October, 7.00pm

THE HOLLIES

CONGRESS THEATRE

Thu 21 October, 7.30pm

ROBERT MILNES ON

PIANO MUSIC

UNDER GROUND THEATRE

Sat 23 October, 10.00am

THE CORONATION OF POPPEA

GLYNDEBOURNE

Sat 23 October, 4.00pm

Tue 26 & Fri 29 October, 6.30pm

HOUDINI

UNDER GROUND THEATRE

Sun 24 October, 7.30pm

TANGO PASION

CONGRESS THEATRE

Tue 26 October, 7.30pm

FOTT – GRAHAM WITHAM

ON GOOD, BAD & UGLY

CONTEMPORARY ART

WINTER GARDEN – GOLD ROOM

Tue 26 October, 7.30pm

YOUNG EODS PRESENTS

PETER PAN

DEVONSHIRE PARK THEATRE

Wed 27–Sat 30 October, 7.30pm

Thu & Sat Mat 2.30pm

MILESTONES:

MILES DAVIS TRIBUTE

UNDER GROUND THEATRE

Fri 29 October, 8.00pm

SCREAMING BLUE MURDER

COMEDY CLUB

WINTER GARDEN – FLORAL HALL

Fri 29 October, 8.00pm

JAZZ PHOTOS BY

BRIAN O'CONNOR

UNDER GROUND THEATRE

Sat 30 October, 10.00am

PIANO RECITAL: PETER KATIN

UNDER GROUND THEATRE

Sun 31 October, 3.00pm

FOTT – NORAH SANDE

AWARD WINNER RECITAL

WINTER GARDEN – GOLD ROOM

Tue 2 November, 7.30pm

THE PARSON'S PIRATES

DEVONSHIRE PARK THEATRE

Tue 2–Wed 3 November, 7.45pm

Wed Mat 2.30pm

HISTORY OF THE BIG BANDS

CONGRESS THEATRE

Thu 4 November, 7.30pm

HMS PINAFORE

DEVONSHIRE PARK THEATRE

Thu 4–Sat 6 November, 7.45pm

Sat Mat 2.30pm

QUILT SHOW

UNDER GROUND THEATRE

Fri 5–Sun 7 November 10.00am

FOTT – ROYAL COLLEGE OF

MUSIC OPERA

GLYNDEBOURNE

Sun 2 November, 2.30pm

THE RAPE OF LUCRECE

LAMB THEATRE

Sun 7 November, 3.00pm

DAVID LLOYD – START THE CAR!

DEVONSHIRE PARK THEATRE

Sun 7 November, 7.30pm

REMEMBRANCE SUNDAY

FESTIVAL CONCERT

CONGRESS THEATRE

Sun 7 November, 7.30pm

ROGER FRY'S POST

IMPRESSIONIST EXHIBITION

IN 1910

CHARLESTON

Mon 8 November, 6.30pm

DON'T DRESS FOR DINNER

DEVONSHIRE PARK THEATRE

Mon 8–Sun 13 November, 7.45pm

Wed & Sat Mat 2.30pm

JOHN DONALDSON'S

UNITY JAZZ BAND

UNDER GROUND THEATRE

Fri 12 November, 8.00pm

DEE RIVERS

UNDER GROUND THEATRE

Sat 13 November, 10.00am

BARNSTORMERS

STAND-UP COMEDY

UNDER GROUND THEATRE

Sat 13 November, 8.00pm

LEST WE FORGET:

FOR REMEMBRANCE SUNDAY

LAMB THEATRE

Sun 14 November, 3.00pm

FOTT – NICHOLAS REID ON

BRITISH IMPRESSIONISTS

WINTER GARDEN – GOLD ROOM

Tue 16 November, 7.30pm

EODS PRESENTS

HAPPY AS A SANDBAG

DEVONSHIRE PARK THEATRE

Wed 17–Sat 20 November, 7.30pm

Thu & Sat Mat 2.30pm

THE BEST OF BRIAN CONLEY

CONGRESS THEATRE

Wed 17 November, 7.30pm

ART BY DEREK BAULCOMB

UNDER GROUND THEATRE

Sat 20 November, 10.00am

AN EVENING WITH

RALPH MCTELL

ALL SAINTS CHURCH

Sat 20 November, 7.30pm

Tickets: 01323 841414

JENNIE ROBIN

UNDER GROUND THEATRE

Sat 20 November, 8.00pm

THE SEVENTH VEIL

UNDER GROUND THEATRE

Sun 21 November, 2.30pm

HUGH THE DROVER

DEVONSHIRE PARK THEATRE

Sun 21 November, 3.00pm

See page 18

THE HAUNTING

DEVONSHIRE PARK THEATRE

Mon 22–Sat 27 November, 7.45pm

Wed & Sat Mat 2.30pm

ALED JONES

CONGRESS THEATRE

Thu 25 November, 7.30pm

A NIGHT AT THE OPERA

CONGRESS THEATRE

Fri 26 November, 7.30pm

SCREAMING BLUE MURDER

COMEDY CLUB

WINTER GARDEN – FLORAL HALL

Fri 26 November, 8.00pm

JOHN CAVE & FRIENDS

UNDER GROUND THEATRE

Sat 27 November, 10.00am

SOUTHERN YOUTH BALLET

PRESENTS LE FILLE MAL GARDEE

CONGRESS THEATRE

Sun 28 November, 4.00pm

COPENHAGEN

LAMB THEATRE

Sun 29 November, 3.00pm & 7.30pm

THE GREAT BIG

CHRISTMAS SING

CONGRESS THEATRE

Tue 30 November–Thu 2

December, 5.30pm & 7.30pm

CHARLESTON UNDER WRAPS

CHARLESTON

Thu 2 December, 11.00am

ART BY NORMAN STARLEY

UNDER GROUND THEATRE

Sat 4 December, 10.00am

CHAMBER MUSIC:

VASHTI HUNTER

UNDER GROUND THEATRE

Sun 5 December, 3.00pm

CINDERELLA

DEVONSHIRE PARK THEATRE

Fri 10 December–Sun 16 January



Hailsham Hosts Creative Melting Pot

Featuring artists, musicians and dramatists from Sussex and the rest of the world, Hailsham Arts Festival takes place at a range of locations in and around the town in September.

Most famous for one of the last livestock markets in the UK, Hailsham might seem an unlikely place for an arts and culture extravaganza. However, from September 10–20 the sleepy town will play host to a melting pot of creativity during the fourth annual Hailsham Arts Festival.

With something for visitors of all ages, the weeklong event includes music, drama and art workshops for children and adults, and the popular art trail and open studios.

Highlights of this year's activities include Bololen a

multicultural band that will play at the Hailsham Community Hall on September 17. Described as African rhythm combined with Indian raga and European harmony, the group will be supported by Pestalozzi dance students.

Other musical events include Hebe Gilham, who recently won a recording contract at just 15 years old, performing along with other local bands at GOTTA BOOM in an afternoon and evening of music and comedy at The Pavilion on September 18. Music fans can also enjoy jazz from the Pete Willson Quartet at Hellingly

Church on September 13 and a night at the opera at St Mary's Church on September 18.

In addition to musical performances, comedy play Haywire will be staged at Summerheath Hall on September 10–11, and there will be literary readings at Olivers restaurant and an exhibition by local artists at Gallery North, where tickets can be purchased for events.

The festival will be opened on September 11 in the town centre by the Christchurch live band, newly formed Eastbourne children's choir RAPPORT! and a variety of busking acts.

Hailsham Arts Festival
Hailsham
September 10–20

(Above)
L–R: Hebe Gilham and artwork
by Veronica Van Eijk.



Feast for the Eyes

Artists group Art On The River will present a feast for the eyes and emotions at Gallery North in Hailsham.

Art On The River Autumn Show

Gallery North, Hailsham
6 October–6 November

*(Clockwise from top left)
Artwork by Adam Beaney,
Katie Sayer, Julie Snowball
and Angela Perrin.*

Artists group Art On The River will hold its Autumn Show at Gallery North in Hailsham on October 6–November 6.

Mary Beaney, founder of Art On The River Exhibitions, is inspired by Byzantine icons and uses acrylic, mixed media and collage with a photographic element in her work.

She said: “At the moment, I’m concentrating on my first love of portraiture. I’ve been motivated by an old family photograph album dating back to the 1850s. The gold edged frame has become an integral part of my painting.”



Other work from the group will include a glimpse of the magic of nature through the lens of self-taught wildlife photographer Adam Beaney; Angela Perrin’s watercolours on canvas; Ben Ecclestone’s colourful moving figure paintings; Julie Snowball’s ceramic nomadic women and stoneware mushrooms, and Kate Sayer’s floral watercolours.

Group newcomer Lucinda Guy, at 18 years of age, is already finding her work is very much sort after, and mother and daughter Rose West and Katie Grubb will exhibit together.

Mary said: “Although only 18, Lucinda’s inspiration comes from

the stars of the silver screen, as well as other faces, using graphite as her medium. Katie is Zimbabwean by birth and it is Africa’s diverse beauty and rich heritage that is a powerful source of inspiration for her work.

Her mother Rose was curator at the National Gallery of Zimbabwe. Her figurative works in oils depict African women as they go about their daily life.

“With this wealth of talent and diverse subject matter, style and media, this exhibition promises to be a feast for the eyes and the emotions. I’m absolutely sure people won’t be disappointed when they pop along to Gallery North.”

Admission is free and Mary will be tutoring acrylic workshops during the exhibition.





Presenting for Your Enjoyment...

There are several amateur dramatics societies in Eastbourne. Here, CQ gives a roundup of what some of them have to offer this season.

Eastbourne Operatic & Dramatic Society

EODS will present classic British musical Peter Pan at the Devonshire Park Theatre on October 27–30. The ageless story tells of how Wendy and her brothers John and Michael are transported to Neverland, with its pirates, Indians, fairies, Lost Boys and crocodiles, and their adventures with the boy who wouldn't grow up as he struggles with the dastardly Captain Hook and his sidekick Smee. A cast of over 30 youngsters from eight to sixteen brings the stage to life in this colourful musical adaptation of Sir J M Barrie's classic story, plus music from a live big band.

EODS will also bring a taste of the happier moments of the Second World War with the musical revue Happy As A

Sandbag at the Devonshire Park Theatre on November 17–20.

The show, devised by Ken Lee, portrays wartime Britain with a selection of funny sketches, famous speeches, demonstrations and well-known musical medleys. Some of the memories covered include child evacuees, morale boosting BBC radio comedy programmes and sing-along tunes, such as Chattanooga Choo Choo, Roll Out The Barrel, Land Of Hope And Glory and We'll Meet Again.

With music provided by a live band, Happy As A Sandbag is patriotic, funny and nostalgic entertainment. Audiences are encouraged to join in the fun and dress in clothing from the era.

Book at the Tourist Information Centre or on 08716 630031 www.eastbourneshows.co.uk

Eastbourne Stagers

Eastbourne Stagers will present a feel good stage adaptation of Summer Holiday at the Devonshire Park Theatre on September 14–18. Based on the film featuring Cliff Richard, Don and his fellow London Transport bus mechanics journey through Paris, the Alps, Italy and Greece, along the way picking up three young girls in a clapped out Mini and a young American pop star on the run from her domineering mother, to the strains of Summer Holiday, Living Doll and The Young Ones.

Directed by Jane James and choreographed by Teresa Smith and Fiona Dean, Summer Holiday is a taste of Great British nostalgia.

Book on 01323 412000 www.eastbournetheatres.co.uk

*(Above)
Eastbourne Stagers will
present Summer Holiday.*

2010 A New Decade of Confidence!



OUR
28th
YEAR

- ◆ Established 27 years
- ◆ Independent Consumer Protection, deposit and advanced payments covered (Details available on request)
- ◆ TrustMark accredited

HKS is a member of the Kitchen, Bathroom and Bedroom Specialist Association, a national trade association founded 30 years ago to promote excellence within the interiors industry and champion consumer protection

HKS is also TrustMark accredited and has therefore been vetted to meet government endorsed standards of quality and reliability to give you complete peace of mind.

Our reputation has been built on excellence!

HKS

Kitchens ◆ Bedrooms ◆ Bathrooms ◆ Studies

231 Seaside, Eastbourne 01323 639446
Hill House, Mutton Hall Hill, Heathfield 01435 865599
138 London Road, St. Leonards-on-Sea 01424 443464
104 South Road, Haywards Heath 01444 452222
www.hks-uk.com



*Selected Ranges for a limited period.



ROLEX.COM

OYSTER PERPETUAL LADY-DATEJUST


ROLEX

w.bruford
jewellers of distinction

11-13 Cornfield Road, Eastbourne BN21 3NA
www.wbruford.com

Watch featured subject to stock availability.