



**Cultural Quarterly**  
Winter 2011

Visitor

**Marching To Music**

An Instinct For Kindness



# RAGER & ROBERTS

ESTATE AGENTS & VALUERS

## Celebrating 20 Successful Years

In the depth of the recession gripping the property market in 1991, when Rager & Roberts was launched, our foundation policy was anchored to four principals:

1. to secure the best possible sale result for our clients' based upon sound valuation advice.
2. to provide the most effective marketing base to ensure our clients' properties reached the largest and most relevant market.
3. to employ staff of high integrity who would fight for their clients' best interest and deal with sellers and buyers alike with honesty and professionalism.
4. to focus solely on residential property avoiding the distraction of letting, commercial sales and the sale of mortgages which can be remunerative but not good for the seller expecting his agent to secure the best buyer rather than the buyer with the big mortgage which would earn another fee.

These principals continue to safeguard our clients' success as well as our own.



### Out of India

Considered to be one of the finest Victorian towns in England, Eastbourne is rich with glorious architecture from the Arts and Crafts period. We have enjoyed handling the sale of Field House which must stand out among its peers for reasons of its distinctive Muhgal styling. Believed to be designed by John D Clarke in 1926 for a judge returning from India its elegant Islamic features would, presumably, have afforded Judge Mumford fond memories of his life in a warmer climate. Field Place continues its life as a fine family home close to Church Street at Willingdon.

### Village Life

The Old Bakehouse at East Dean is an intriguing property situated just south of the picturesque village green close to scenic downland. In early Victorian times the villagers, from the squire to the local shepherds would have been familiar with the bakery which still stands attached to the main house and its smell of newly baked bread as it wafted down the lane. The old cavernous brick oven remains but our clients, owners for many years, have put their energy into creating a lovely home preserving its character and creating an extremely pretty garden setting.



#### TOWN CENTRE OFFICE

36 Cornfield Road, Eastbourne BN21 4QH  
Tel: 01323 430133  
Fax: 01323 430144

#### CUCKMERE BUSINESS CENTRE

1 North Street, Alfriston BN26 5UG  
Tel: 01323 871171  
Fax: 01323 430144

#### OLD TOWN OFFICE

117 Green Street, Eastbourne BN21 1RS  
Tel: 01323 419911  
Fax: 01323 641941

ISSN 1757-1138

### Cultural Quarterly

A quarterly niche carving magazine dedicated to Eastbourne's flourishing arts and theatre scene, packed with insightful content and stunning visual appeal. CQ is distributed from various locations around Eastbourne, including the cultural quarter's venues.

*Environment aware print*

*Printed by Eastprint on FSC and ISO 14001 accredited paper using soya-based inks.*



© PRG Ltd, 2011

All rights reserved. Reproduction of any part of this publication is prohibited without permission. Every effort is made to ensure accuracy, but the publisher accepts no responsibility for editorial opinions or statements, and no liability for products or services described in this magazine.

The Point, College Road,  
Eastbourne BN21 4JJ  
Tel: 01323 646076  
Fax: 01323 411050  
Email: [publishing@prg ltd.co.uk](mailto:publishing@prg ltd.co.uk)

Publisher: Raymond Groves

Editor: Faye Spiers

Design: Matt Sommers

Contributor: Lisa-Marie Harrity

Advertising: Tracey Ledger & Michaela Bailey

Cultural Quarterly  
Winter 2011

# Contents



#### 4 They're Here...

Ruth Gibson and Bruno Martelli tell CQ about Visitor at Towner.

#### 8 Carrying the Torch

CQ talks to Chris Lerner about his show An Instinct For Kindness.

#### 12 Riot Act

CQ speaks to Malcolm Webster about *Marching To Music and Eastbourne's riots*.

#### 16 Warm Tones

Saxophonist Amy Dickson tells CQ about her solo performance with the LPO.

#### 18 Seeing with New Eyes

Bluemonetnet artists have looked at the Towner Collection with new eyes.

#### 20 Musical Networking

Simon Smith tells CQ how he has embraced the internet at a promotional tool.

#### 22 An Actor's Life for Me

Peter Sundby talks to CQ about his touring shows and theatre workshops.

#### 25 Talking Point

CQ speaks to artist Mary Beaney about the difference between her older and newer work.

#### 25 Tale of Two Galleries

Two local galleries are showing new exhibitions.

#### 27 Melting Music

CQ talks to Melting Vinyl about branching out of Brighton into Eastbourne venues.

#### 28 Eastbourne Presents...

Information on this season's events in Eastbourne.

#### 30 Presenting for Your Enjoyment...

A roundup of amateur dramatic productions in Eastbourne.



## CQ Online

On Cultural Quarterly's website you can now download back issues, sign up to our e-newsletter and follow us on Facebook and Twitter.

[www.culturalquarterly.co.uk](http://www.culturalquarterly.co.uk)

[www.facebook.com/culturalquarterly](https://www.facebook.com/culturalquarterly)

[@CQCulturalQuart](https://twitter.com/CQCulturalQuart)



# They're Here...

Artists Ruth Gibson and Bruno Martelli talk to CQ about their touring exhibition *Visitor*, which is proving to be more than a little eerie.

**There are certain areas in the world where time seems to have left no identifying marks. The Canadian Rockies is such a place – raw, vast and intimidating beauty. It's little wonder that inspiration is often thrust upon its visitors, whether welcomed or not.**

For artists Ruth Gibson and Bruno Martelli, inspiration developed during a six week residency at The Banff Arts Centre in Alberta, Canada, deep in the snowy mountains in 2009. The result is their touring exhibition *Visitor* – but who is watching whom?

*Visitor*'s Vermillion Lake is a

full-size replica of a trapper's cabin that houses an interactive virtual environment. Where *The Bears Are Sleeping* is a film depicting monochromatic imagery of glaciers, forests and frozen landscapes. In both works, either a friendly or malevolent force is suggested, evoking the hunter being hunted. Employing techniques used in video games, the exhibition plays with our apprehension of different forms of reality, bringing exterior virtual space into the gallery.

Recent reviews mention an 'unsettling atmosphere', 'a vague sense of threat' and 'the

impending sense of doom'. It all seems quite amusing to the pair, if not altogether surprising.

Martelli said: "We didn't intend it to be ominous, but a few of our pieces have turned out vaguely threatening. However, some people have also found them very relaxing. It's what people and their imagination bring to it."

Speaking of their experiences in the Canadian Rockies, Martelli said: "It's an enormous place, a vast and amazing natural wilderness. You can drive for hours and hours and still be in the national park. On top of one

## **Visitor**

Towner

January 28 to April 1

*(Above)*

*Where The Bears Are Sleeping evokes the hunter being hunted.*



## TOWN PROPERTY NEW OFFICE NOW OPEN!!

Our new office at 318 Seaside is now open!

If you are considering selling please call our Seaside office on 410044 or our town centre office on 412200 to arrange a valuation.



**PUSH THE BOUNDARIES**  
WITHOUT PUSHING YOUR BUDGET



THE VOLVO C30 2.0 R-DESIGN - JUST 21495 ON THE ROAD

Take expressing yourself to the next level with our most eye-catching coupe yet – the compact and sporty Volvo C30 2.0 R-Design. Turn heads with 17" Gloss aluminium wheels, a unique interior, sport chassis, sleek bodykit and much more – all for just £21,495 on the road. Simply call or visit the dealership to book your test drive or find out more about offers across our Volvo line range.

**Caffyns PLC 46 Lottbridge Drive Eastbourne East Sussex BN23 6PJ 01323 344371 [www.caffynsvolvo.co.uk](http://www.caffynsvolvo.co.uk)**

Fuel consumption and CO2 figures for the Volvo C30 2.0 R-Design in mpg (l/100 km): Urban 26.2 (10.8), Extra Urban 48.7 (5.8), Combined 37.2 (7.6), CO2 emissions 127 g/km.



“We didn’t intend it to be ominous, but a few of our pieces have turned out vaguely threatening.”

hill, you can turn 360 degrees without any manmade objects in sight. It’s amazing.”

According to Martelli, the artists used a Victorian travel book to visit recommended sites, creating an inspiring ‘then and now’ experience, which was also capitalised by a visit to a film set from *The Assassination Of Jessie James* starring Brad Pitt. However, the movie village also revealed another juxtaposition between real and fake.

Martelli said: “The house they made for Jessie James in the movie was very accurate, but

other houses down the hill were all fake, just fronts. There was a strange tension between it being real and fake. Standing in one place it’s real, but standing in another the same object is fake.”

According to Martelli, this was the inspiration for Vermillion Lake.

He said: “With the cabin we created for Vermillion Lake, we are trying to bring out this feeling. Real and fake in the same time. It’s unsettling. The interior is the exterior landscape.”

The Canadian Rockies wilderness and the abandoned ‘village’ also inspired *Where*

*The Bears Are Sleeping*.

Martelli said: “As beautiful as the scenery is, you start to feel like an alien in this landscape and it’s a bit threatening in a way. It’s not all picture postcard beautiful. When the fog comes in, it’s weird.

“There are warning signs for avalanches, bears, wolves, mountain lions, cougars. There aren’t any people, just an uninhabited landscape where houses suggest people, but the gallery member is the visitor to the landscape.

“The video piece has a yeti character in all the scenes. In that case, the incongruous character is the visitor in the landscape. The idea is that you are observing the character in the film. In the other piece, you are being observed by the landscape.”

Gibson and Martelli’s work often uses game technology and motion capture to create the landscape, inadvertently creating an interaction.

Martelli said: “The exhibition is more playful than a game – no rules, no goals, no time limits – and it’s not scientific, it’s a combination of real and fantasy or imaginary, and smashing them together.”

*(Above)*  
*The Canadian Rockies inspired*  
*Where The Bears Are Sleeping.*

*(Below)*  
*Vermillion Lake.*



de la warr  
pavilion

EXHIBITIONS  
dlwp.com

# WARHOL IS HERE

ARTIST  
ROOMS

ON TOUR WITH THE

**ArtFund**



**Open every day\***

**Free**

**[www.dlwp.com](http://www.dlwp.com)**

Over 120 works by  
Andy Warhol

Plus *The Search for  
the Voice of Warhol*,  
an audio installation  
in the roof top foyer

Café Bar and Shop  
open every day



# Carrying the Torch

CQ talks to Chris Larner about his show *An Instinct For Kindness* and the journey he made with his ex-wife Allyson to the Dignitas clinic in Switzerland.

**In his one-man show *An Instinct For Kindness*, writer and actor Chris Larner tells the story of how he accompanied his ex-wife Allyson, who suffered from multiple sclerosis, to the Dignitas clinic in Switzerland to end her life.**

Chris said: "It's me talking to the audience and telling how Allyson and I met and what happened in our lives, how she got ill and came to the decision that if things got too bad she wanted to go to Dignitas.

"And things did get too bad. It's the story of how that built up really, and then the story of

going to Dignitas and what you have to go through to get there and what you go through when you actually are there. It's me telling that story."

Chris and Allyson met whilst in the same theatre company, got married and had a son, and got divorced. Five years ago, Allyson asked Chris to accompany her to Switzerland when the time came.

He said: "We were married in 1983 and we were divorced by 1986, but we stayed friends.

At the time she asked me, it was speculative. She had a line beyond which she didn't want to go – if her body gave up on

certain key areas, she said she couldn't face it after that. So when she asked me, it was a theoretical question and I said, yes, I will, as long as it's cleared with our son.

"It was three years between when she first asked me to go with her and when we actually went. Very often when you get to those stages of multiple sclerosis your body decays a bit, something else gives up, but maybe there's a slight recovery, so there was a long time when Allyson was going, 'let's wait until spring and see if this leg starts working again or if this bladder starts working again',

## **An Instinct For Kindness**

Under Ground Theatre

February 18

*(Above)*  
Chris Larner.

## **Sometimes things just need to be simple.**

It's easy to get lost when planning any work to your property. From the first spark of an idea through to completion, there are enough hurdles to trip anyone up, so why not make life easy? We have.

It starts with creating the design together, we get it Approved and then Manage the Construction through to Completion. The complicated bits are our problem.

We have the whole experience built around your needs, so all you really have to do is make the tea (and pay the bills of course, its not THAT simple).

Call us **01323 431892**, to arrange a free consultation, or visit **[www.spitfirearchitecture.com](http://www.spitfirearchitecture.com)**



## Carrying the Torch

and gradually it was obvious that that wasn't going to happen and from here on in it was inexorable decline. She couldn't really look after herself, which was a nightmare for her because she was fiercely independent and had always looked after herself and been very strong."

As the trip drew closer, the practicalities of flying a wheelchair user to Switzerland took over and distracted Chris from his emotions about the event.

He said: "There were so many practicalities to deal with that you don't really have time to address a whole load of the emotions until you're there or just afterwards. I felt ambiguous about it, I suppose, but I knew it was what she wanted to do and I didn't have a moral objection to it. But it's not an easy thing to do.

"She studiously avoided those conversations – she didn't ask me how I was feeling, which was good because it



(Left)  
Chris began writing the show only months after his return from Zurich.

# "The show was emotionally very cathartic and very tough to do."

might have meant that I would have broken down. Her strength certainly was key to it – if she'd have been wobbly in her resolve, I think it would have wreaked havoc on me."

After giving up acting, Allyson became a drama teacher at a college in Leeds and Chris is certain that she would have approved of the show.

He said: "I took the show to the college and played to an audience of ex-students and colleagues of hers, which was quite emotional. People said to me, 'that is absolutely what she would have wanted to have done with it'.

"I feel like I'm carrying the

torch a bit for what theatre can do, which is talk about issues like this in a way no other medium can."

Chris began writing the show only months after his return from Zurich and wondered if he was doing the right thing.

He said: "Almost immediately, I thought, I have to do something with this story. I thought, is it just ghoulish to do this so soon afterwards? But, by about February, I thought, no, I have to do this, so I started writing."

An Instinct For Kindness premiered at Edinburgh Fringe 2011, where it won the coveted Scotsman Fringe First Award, and was featured on BBC's

Newsnight Review as a highlight of the festival.

Chris said: "The show was emotionally very cathartic and very tough to do. I think it's quite tough for an audience to watch, but there are a huge number of people who have said to me that they found it ultimately a very uplifting story, although there's no getting away from the fact that it's bloody sad.

"It's the story of someone being strong I think, which I'm glad of because I wouldn't want to do a show that is just pure misery with no redemption at the end of it. I think it's a complicated emotional journey but it's not all downbeat."

**Function in an elegant form.  
Now at our Centre.**

The eagerly anticipated Audi Q3 has arrived and is now available to order. If you'd like to find out more about our first ever compact SUV, or to arrange a test drive, visit your local Audi Centre or [audi.co.uk/Q3](http://audi.co.uk/Q3)



**Eastbourne Audi**

2 Edward Road  
Willingdon Drive  
Eastbourne  
East Sussex  
BN23 8AS  
01323 525700  
[centre.eastbourne.co.uk](http://centre.eastbourne.co.uk)

Official fuel consumption figures for the Audi Q3 range in mpg (l/100km) from: Urban: 27.7 (10.2) - 45.6 (6.2), Extra Urban: 44.1 (6.4) - 60.1 (4.7), Combined: 36.7 (7.7) - 54.3 (5.2). CO<sub>2</sub> emissions: 179 - 137g/km.



**call-a-cab**

[www.746746.co.uk](http://www.746746.co.uk)

**need a cab?...call a cab!**

**01323 746 • 746**

**freephone: 0800 99 61 746**

**24 HOUR SERVICE** [call-a-cab@746746.co.uk](mailto:call-a-cab@746746.co.uk) **LICENSED PRIVATE HIRE**





# Riot Act

CQ talks to producer Malcolm Webster about the Riot Film Group's docudrama on Eastbourne's Salvation Army riots.

**In January, the Riot Film Group will premiere *Marching To Music*, its film about the riots that occurred in Eastbourne in the early 1890s between the Salvation Army and a Skeleton Army raised by local publicans and hoteliers.**

Producer Malcolm Webster said: "It will open a window on a part of the town's history that has remained less well known. The intention was to produce a film that would document in an artistic way a period in Eastbourne's history, and that the project should draw as much as possible on talent from within the local community."

In 2007, it was suggested that the riots would make a good subject for a film, and the Riot Film Group was formed by members of amateur filmmakers' group Eastbourne Moviemakers to produce a docudrama about the fighting as a local heritage resource and

teaching medium. Deborah Sharpe used newspaper reports and documents loaned by a member of Eastbourne's Salvation Army Citadel to write a script, and the film's director and editor Jonathan Wilde then gave the script a filmic treatment.

Malcolm said: "The document that had the greatest influence on both Deborah's and Jonathan's work was *Marching With Music*, an eyewitness account of the riots by Walter Guy who, in 1891,

was a young recruit in the Salvation Army. His journal has pride of place in memorabilia displayed at the Citadel."

In 1890, the Salvation Army opened its Citadel in Langney Road in Eastbourne and, at first, the town welcomed the Salvationists. But their vigorous opposition to alcohol soon worried local publicans and hoteliers, who persuaded the town council against them and recruited a Skeleton Army – a phrase coined in the 1800s for groups of organised gangs

**Marching To Music**  
Birley Centre  
January 28

*(Above)*  
The film revolves around central characters Tom Boniface and his wife Elizabeth.

*(Below)*  
Publicans and hoteliers raised a Skeleton Army.





**saffron**  
art gallery

# Christmas Exhibition

Sat 26th Nov - Sat 24th December  
Original art from £25 - £5000

International, award-winning artists ■ "London standard gallery" ■ Regular exhibitions



*Original Art, Exclusively Yours*

[www.SaffronGallery.co.uk](http://www.SaffronGallery.co.uk)

Saffron House 59-60 High Street  
info@SaffronGallery.co.uk

Battle TN33 0EN 01424 772 130  
facebook.com/SaffronGallery



## The Orchid Rooms

beauty spa & therapy suite

Enjoy some  
**YOU** time.....

Let The Orchid Rooms

relax, invigorate, calm and beautify you....



01323 722266

[www.ewf.co.uk/eastbourne](http://www.ewf.co.uk/eastbourne)

66 Grove Road, Eastbourne, BN21 4UH

Elemis he-shi. JESSICA ilash SUSAN POSNICK



International

Club of the Year 2009 & 2010

**energie**

fitness for women

**Getting into shape..... just got easier**

Two 30 minute circuits designed for EVERY woman

FREE  
day pass  
for CQ  
readers

Our circuits are  
simple to use  
and offer  
**fantastic results!**

We provide  
all the help you need  
to achieve your  
**ideal figure.**



Vibration Plate  
workouts now available!



**Call now to arrange your free trial**

**01323 722266**

[www.ewf.co.uk/eastbourne](http://www.ewf.co.uk/eastbourne)

66 Grove Road, Eastbourne, BN21 4UH

## Riot Act



prepared to disrupt and fight anyone for their paymasters – to disrupt their activities.

The cameras began rolling on the film in 2010 after Nick Moon and Tiffany Da Silva were cast as central characters fisherman and lifeboat man Tom Boniface and his wife Elizabeth, and Natalie Roberts and her daughter Tallulah were drafted in to narrate. By October last year, the narration scenes had been filmed at

“The next challenge was to source costumes appropriate for the late 1800s; of these, locating a sufficient number of Salvation Army uniforms seemed the most daunting. Fortunately, the Salvation Army has a ministries drama section in London and, with their cooperation and work in making ten caps of the correct design, the bandmen and other lead characters were uniformed.

morning to avoid traffic noise and other modern intrusions, but even then the crew had to gain the cooperation of street cleaners with mechanical sweepers. Sensitive sound equipment meant that small aeroplanes and hedge trimmers occasionally brought filming to a halt.

Nearly eighty people were involved in the production, from principal acting roles and extras to film crew, wardrobe, makeup artists and photographers.

Malcolm said: “A day or so prior to the biggest and most challenging street scene, we were still short half a dozen young ruffians. But, come the day, our Skeleton Army was kitted out with placards and staves and ready to fight.”

Eleven hours of video were shot in sixteen locations, sometimes using three cameras concurrently, making editing both time consuming

*(Left)  
Nearly 80 people were  
involved in the production.*

“The biggest challenge was to find roads without satellite dishes, parked cars and other twenty first century adornments.”

Ocklynge Cemetery, where Tom Boniface is buried.

Various film locations were identified around Eastbourne, including the beach and local pubs and churches, and kitchen scenes were filmed at a house in Litlington.

Malcolm said: “The biggest challenge was to find roads without satellite dishes, parked cars and other twenty first century adornments. After critical examination, three were selected, one of which required an official road closure, which was achieved with assistance from Eastbourne College and Eastbourne Borough Council’s film liaison unit.

“Generous assistance from Valerie Dormady of Costume Place and help from Eastbourne Operatic & Dramatic Society’s wardrobe saw most of the cast and extras appropriately catered for. Individual items suitable for a fisherman were kindly loaned, and it just remained for us to hire police uniforms from theatrical costumier Harvey’s of Hove.

“Props also had to be correct for the era and the proprietors of How We Lived Then were extremely helpful with loaning items.”

Most of the outdoor scenes were filmed in the early

and exacting.

Malcolm said: “Some editing had been achieved between filming sessions, but adding separately recorded piano and solo instrumental pieces could only be done when most of the video editing had been completed.”

Marching To Music will premiere at the Birley Centre on January 28. The Riot Film Group has already raised over £1,000 to cover the cost of the project, and hopes to raise the rest through screenings and sales. Groups interested in showing or purchasing the film should contact Irene Graven on [prigraven@tiscali.co.uk](mailto:prigraven@tiscali.co.uk).

**Francis Perry**  
CONTEMPORARY ART AND SILVER JEWELLERY

**NEW GALLERY NOW OPEN IN EASTBOURNE  
SUPPORTING LOCAL ARTS AND CRAFTS**



**Original art, prints, sculpture, ceramics,  
stained glass, woodcrafts, silver pewter-ware,  
handmade cards, silver rings, bracelets, necklaces,  
designer earrings and cufflinks**

67 Susans Road, Eastbourne. BN21 3TG  
T: 01323 735435 E: info@francis-perry.co.uk  
W: www.francis-perry.co.uk



**jewellers & silversmiths**



We are a friendly family run jewellers with exceptional customer service. We have one of the largest stocks of fine quality antique and secondhand jewellery in the area as well as a unique and varied selection of modern jewellery and handmade wedding rings. Our silver department has a large selection of silverware and jewellery and with prices from £15 we can find something for all tastes and budgets.

M Jewellers also undertake valuations and repairs to jewellery, silver, watches and clocks. We also buy scrap gold and silver. For a truly memorable shopping experience come to M Jewellers Eastbourne's Finest.



**121 South Street (near the War Memorial), Eastbourne, East Sussex BN21 4LU**  
**01323 430304**

**mjewellers@btconnect.com**





# Warm Tones

CQ spoke to award winning classical saxophonist Amy Dickson about her solo performance with the London Philharmonic Orchestra in January.

**When you consider her list of accolades, it's inconceivable that classical saxophonist Amy Dickson would have pursued anything else. Her achievements include being the first saxophonist to win the Gold Medal at the Royal Overseas League competition in 2004, the Symphony Australia Young Performer of the Year Award 2004, and the Eastbourne Young Musicians Competition.**

In January, Amy will appear at Eastbourne's Congress Theatre performing Glazunov Saxophone Concerto and Villa Lobos Fantasia, accompanied by Danail Rachev conducting the London Philharmonic Orchestra. Orchestral pieces will include Prokofiev Symphony No 1 and Tchaikovsky Symphony No 5.

As the lady herself said: "They are beautiful pieces and it's going to be wonderful to

play them with such a distinguished orchestra."

The young Australian began playing the saxophone when she was six years old, playing classical music and jazz, but classical always came first.

Amy said: "I chose classical music because I felt the most affinity towards it. The sound is the most important element. I like a beautiful warmth of tone and it's very different to a warm sound in a jazz world. It's like speaking a different language."

Luckily, Amy chose classical music and pursued it with passion and determination. She was one of the first saxophonists to leave Australia to study overseas.

Amy explained: "When I finished school in Australia, there were a few saxophonists whom I greatly admired and I wanted to study with them in Europe. I listened to people's CDs and wrote to them and, in my gap year, I went to London,

Paris and Amsterdam. I auditioned for a scholarship at the Royal College of Music in London, which I won and spent four years there, and then one year at the Conservatorium van Amsterdam in 2003. My teachers have included Kyle Horch and Arno Bornkamp, musicians I greatly admired."

Amy's career has taken her all over the world as a soloist, accompanied by some of the world's most prestigious orchestras. Although not her first time visiting Eastbourne, her performance in January will be her first time performing in Eastbourne accompanied by the London Philharmonic Orchestra.

For Amy, the future is busy, with a tour of the UK over Christmas, and working with contemporary composers. But it's a dream job, she says.

"I have some great memories, and I hope to continue doing what I love."

## **London Philharmonic Orchestra**

Congress Theatre  
January 15

*(Above)  
Classical saxophonist  
Amy Dickson.*

# The Full Gamut

## Printing Services:

Fine Art Printing	Annual Report Printing
Stationery Printing	Leaflet Printing
Business Card Printing	Price List Printing
Brochure Printing	Travel Guide Printing
Company Folder Printing	Hotel Brochure Printing
Magazine Printing	Direct Mail Printing

## Studio Services:

Our studio offers a design and artwork service for all your needs.

**Thinking of a fresh look for next year?**

Contact us for a free consultation on 01323 728338.

## eastprint

point your print in the right direction

East Print Limited

The Point • College Road • Eastbourne • East Sussex • BN21 4JJ

Tel: 01323 728338 • Email: [sales@eastprint.co.uk](mailto:sales@eastprint.co.uk) • [www.eastprint.co.uk](http://www.eastprint.co.uk)



dedicated to  
the environment

## Inspirational Kitchens *by Russ Deacon*



- Design to installation
- Established for over 18 years
- Agents for Schmidt, French No.1 Brand
- Replacement kitchen doors

Make your dream kitchen a reality!



369 Seaside, Eastbourne  
Tel: 01323 642075  
[www.russdeacon.co.uk](http://www.russdeacon.co.uk)



**Kitchens - Bathrooms - Bedrooms**



To advertise your business in **Cultural Quarterly**  
please contact Michaela Bailey on  
**01323 646076** or [michaela@prgltd.co.uk](mailto:michaela@prgltd.co.uk)

## simpsons

clear financial sense



We provide a local Wealth  
Management Service for  
Private Individuals,  
Trustees & Pension Funds.

### Contact us for:

A personal, reliable and consistent service

Strategic and tax planning advice

Actively Managed or Passive Investment Portfolios

Clear fee based advice (no hidden charges or commissions)

Quote CQM for a complimentary initial consultation

Simpsons Independent Financial Advisers

51 Gildredge Road : Eastbourne : East Sussex : BN21 4RY

Phone: 01323 734997 Email: [info@simpsonsifa.co.uk](mailto:info@simpsonsifa.co.uk)

Web: [www.simpsonsifa.co.uk](http://www.simpsonsifa.co.uk)

Simpsons Independent Financial Advisers are authorised and regulated by the Financial Services Authority



# Seeing with New Eyes

Six artists have looked at the Towner Collection with new eyes.

**Six artists from the artists' network Bluemonkeynet have been given the opportunity to curate a display from the Towner Collection. The exhibition *New Eyes*, showing at Towner on October 22–February 19, is the gallery's first show curated by artists and features work by Picasso and Ravilious.**

Bluemonkeynet aims to provide opportunities for professional and creative development for East Sussex artists. The network runs regular monthly events aimed at promoting the exchange of ideas, information and skills.

The curatorial group comprised Paul Bartholomew, Sally Colledge, Nikki Davidson-Bowman, Sheila Hay, Axel Hesslenberg and Cat Ingrams – a painter, a printmaker, a sculptor, a photographer, a ceramicist and an installation

artist – who were chosen to reflect the breadth of local contemporary artistic practice. The group were inspired by the Marcel Proust quote: “The real voyage of discovery consists not in seeking new landscapes but in having new eyes.”

Axel Hesslenberg said: “This has been a fantastic opportunity to discover the breadth of the Towner Collection and, for me personally as a photographer, to revel in the outstanding photography it contains. I'll be very interested to see the public's reaction to our take on the collection, and their experience of viewing the collection through the eyes of artists.”

The works on show range from painting and printmaking to ceramics and photography, including etchings by Pablo Picasso, teacup designs and woodblocks by Eric Ravilious and a film by Tacita

Dean. Works from the founder of the British pop art movement Eduardo Paolozzi and Turner Prize winner Grayson Perry and ceramics by Quentin Bell are also featured.

Eastbourne Borough Council cabinet member for tourism councillor Neil Stanley said: “The Towner Collection is an fantastic resource for local people and, with every new display, we aim to involve another sector of our community – since the new Towner opened, we have worked with children, young people and teachers. This time a group of local artists has provided a whole new way of looking at our collection from an artist's perspective. Their energy, enthusiasm and artistic eye has made for a fantastic display, which brings together a wide range of works in all media and inspires us all to look upon art with fresh eyes.”

**New Eyes**  
Towner  
October 22–February 19

*(Above)*  
*Bluemonkeynet artists*  
*have curated a Towner*  
*Collections display.*




**DW Carpentry** is an Eastbourne-based company offering full domestic carpentry services, including:

- Kitchen fitting
- Loft conversion
- Home refurbishment
- Wood floor installation
- Door hanging
- Garden decking
- All other home carpentry

We also specialise in sash window refurbishment, replacement and draught proofing.

For examples of our work, visit [www.dw-carpentry.com](http://www.dw-carpentry.com)

Call Darren now on **07733 267 521** to discuss your requirements and to arrange a free quotation.



We are committed to offering our guests an **enjoyable dining experience** with

the **taste & warmth of Thai hospitality**



We offer an excellent value set lunch menu for **£9.95 Inc wine**

The **Thai House** combines outstanding traditional cuisine with a subtle authentic décor and a warm, welcoming ambience – bringing the charms of Thailand to Eastbourne.

Our chefs use only the very finest & freshest ingredients, which reflect a rich mix of the traditional dishes of Thailand whilst blending in a variety of regional specialities. We also stock a well-balanced wine cellar & range of Thai beers and Thai whiskies.



**The Thai House**  
01323 646155  
[www.the-thaihouse.com](http://www.the-thaihouse.com)  
55 GROVE ROAD,  
EASTBOURNE,  
EAST SUSSEX BN21 4TX



Booking recommended.  
Take Away Available.

Scan Me

# Hopkins & Partners

## Qualified ARLA Letting Agents

01323 416123

[www.hopkinspartners.com](http://www.hopkinspartners.com)

Houses Urgently Required  
2 & 3 Bedrooms all Areas

# Stephen Rimmer L.L.P.

## SOLICITORS

*“quality assured legal services”*



- Residential Conveyancing
- Commercial Property
- Company & Commercial
- Business Advice
- Personal Injury
- Family Law - Mediation
- Probate, Trusts, Wills
- Civil Litigation
- Criminal Litigation
- Employment

28-30 Hyde Gardens, Eastbourne | Tel 01323 644222  
[www.stephenrimmer.com](http://www.stephenrimmer.com)



# Musical Networking

Artist, photographer and writer Simon Smith has embraced the internet as a tool to promote his work.

**Although he has been writing music since the 1980s, Simon Smith has only just recorded his second album, entitled *Wonderful Life*. Hardly surprising, considering that, as well as writing songs, he also manages to find time to be an artist, photographer and teacher.**

He said: "I don't sleep a lot and I work nearly all the time. But I enjoy it, so it's not really work, is it? I'm not doing much painting at the moment as I'm doing the publicity for the album – that's pretty much full time and has taken over."

Simon began performing in 1989 and gigged around London. He has written and recorded around 300 songs and currently writes in collaboration with Steve Dumelo.

He said: "When Steve and I are working together, he'll play guitar and I'll just sing the song immediately and it's there. It

just happens. We did a lot of gigs from around 1993 onwards for a few years, and we used to do festivals and things like that.

"It's not that I didn't enjoy it because I like gigging, I like talking to the audience and all that stuff, but I don't particularly feel like a pop star. I'm not one of those people who can jump on stage and think how great I look.

"I didn't really get a buzz, but I enjoyed the communication. I'm getting that communication now from the internet."

Simon has exploited the internet and social networking sites to promote his music. He currently has over 85,000 followers online, including Facebook, Twitter and Reverbnation.

He said: "I actually really enjoy the engagement with people on Facebook, it's really natural for me – I love talking to people, flirting, showing off. I have nearly

85,000 followers if you include MySpace and Bebo and everything else. My fans come from all over the world – I've got about 10,000 in India, in Delhi mainly. At least two songs on the album are about the internet – *Come Home* and *Facebook*.

"The internet is the net that sets you free. Not only is it a new way of getting attention, getting an audience, but it's also a completely different process. You can't try to sell yourself – that puts people off; you just have to be who you are and engage with people naturally and genuinely. It won't work otherwise.

"I think this is all part of a new era in terms of marketing oneself. If you haven't got someone to do the publicity for you, and most of us haven't, you've got to do it yourself if you want an audience."

*Wonderful Life* is available online at [simonmarksmith.com](http://simonmarksmith.com)

*(Above left)*  
L–R: Steve Dumelo and Simon Smith.

*(Above right)*  
Tree by Simon Smith.

# Grand Buildings



Just off Eastbourne seafront behind the UK's only seaside five star hotel and close to the town's theatres are the quaint and enticing shops of Grand Buildings. Take time to browse the parade without the hustle and bustle of the high street. There's something for everyone, from fine wines and jewellery to shops that will feed your creative flair. Or you can just take time to relax and have a cup of coffee whilst watching the world go around. Whatever your shopping needs, a warm welcome awaits you.




large range of  
**FABRICS**  
**WOOL/YARN**  
**TRIMMINGS**  
& fun  
**WORKSHOPS** for  
sewing, quilting,  
crochet & knitting

5/6 Grand Hotel Buildings (behind The Grand Hotel) Compton Street, Eastbourne, East Sussex  
[www.owlandsewingcat.com](http://www.owlandsewingcat.com)

## som

01323 724625  
info@somjewellery.com  
www.somjewellery.com  
www.skullsandorchids.com

7 Grand Hotel Buildings  
Compton Street  
Eastbourne  
East Sussex  
BN21 4EJ




Romany & Patricia welcome you to  
**The Compton Lounge**

12 Grand Hotel Buildings, Compton Street  
Eastbourne, East Sussex BN21 4EJ  
Telephone: 01323 731662  
[www.thecomptonlounge.co.uk](http://www.thecomptonlounge.co.uk)

cooden cellars  
independent wine merchants

14 Grand Hotel Buildings, Compton Street,  
Eastbourne, East Sussex, BN21 4EJ  
Tel/Fax: 01323 649663. 10am-6pm, Mon-Sat  
Email: info@coodencellars.co.uk



# An Actor's Life for Me

Peter Sundby talks to CQ about his current touring shows *Standards* and *Changing Moods* and his theatre workshops.

**Actor Peter Sundby is happy to be known as a 'theatre practitioner', a term coined by his friend to cover his love of acting and "dabbles" in directing. But the Eastbourne based actor with plumbing skills is also passionate about teaching his art and love of the theatre.**

Peter is under no illusions how difficult life as a professional actor can be. Indeed, he tried taking the more conventional path by training as a plumber and becoming a plumbing lecturer in further education for ten years. But, once an actor, always an entertainer.

He said: "I have always been an actor and nearly became a professional actor as a child, but life got in the way. People who knew me as a plumber said I was always an entertainer."

Peter has been luckier than many actors, with roles in film,

television and theatre meaning he now sees himself as an actor who does some plumbing. But there are more strings to this man's bow.

He said: "As well as an actor, I have a teacher in me, as I discovered while being a plumbing lecturer. Now, my passion is for Commedia Dell'Arte, the root of most theatre, and the technique of acting, rather than singing and dancing. There's quite a lot of acting opportunities for kids in Eastbourne, but older kids feel there is a shortfall in straight drama, serious and comedic, without music and dance. So I set up a workshop, Straight Up Theatre, to address that at Cavendish School that ran all last year very successfully. We are hoping to run it again after Christmas if there is enough interest.

"I have also held storytelling drama workshops at Mr & Mrs

Doak's Bumper Bookshop for Boys & Girls on Grove Road in Eastbourne for primary school children. A friend asked when we are going to do workshops for adults, but it's about finding the luxury of time."

It's nearly eight years since Peter left drama school – the Academy of Creative Training, Brighton's equivalent to the Poor School for mature students coming back to the idea of acting who have to support themselves and families. For Peter, his latest project – a five show mini tour of two plays in one night with the Jump Through Hoops Theatre company – has been something of a reunion, as everyone involved has a connection through drama school. Peter has an acting role in *Standards* and has adopted the assistant director role for *Changing Moods*.

He said: "Jump Through

*(Above)*  
*The Jump Through Hoops Theatre company are on a mini tour of two plays.*

Hoops Theatre is all about working together as a cooperative company – we all pitch in. The longer you are an actor and the more application you have for good theatre, then you start to diversify and do a bit of directing, but I wouldn't say I was a director. With Changing Moods I have taken it upon myself to be assistant director to help out, but that's the beauty of being part of a group, we all pitch in and help each other.

"It's about bringing new plays to an audience. We want to see how the audience reacts and if they are well received, then we can enter the Brighton Fringe Festival in May.

"The show at the Lamb Theatre in Eastbourne was a fantastic success. We had a full house, as we had set up as a 60 seated studio space, so we as a company and Jim the landlord were very pleased, and I think this could bode very well for more regular shows from us at the Lamb Theatre. This collaborative production has been somewhat less stressful than doing it all myself last year, and I expect more work and collaboration from StraightUp Theatre and Jump Through Hoops Theatre and the Lamb Theatre could well be the cultivating ground for that."

According to Peter, Standards is about the fact that we all have a past, and sometimes it's not very savoury. Peter's character Johnnie returns to his hometown after 17 years and encounters two former school colleagues who bullied him at school, and the girl he had a crush on but never had the courage to tell her. He finally asks her out on a date but, while waiting for her to arrive, he bumps into the school bullies who actually reminisce about how they bullied him and their experiences with the girl.

Peter said: "Ultimately, it's about accepting the people we



are. It's about real people and confronting certain issues. It's a gritty play with funny points, and some of the most hideous and grotesque parts are the funniest.

"Changing Moods is about the writer's rather surreal experience with a flatmate when suddenly she started behaving rather oddly – a psychotic experience – and the story follows this day in their lives. Again, there are funny moments, but it is quite tense.

Funny elements often present themselves from bad situations and it's often an involuntary reaction. You know it's inappropriate but you can't help but laugh. At drama school, we used the example of witnessing someone tripping over the pavement – you know you shouldn't, but most of us laugh as our first reaction.

"With both plays, we want people to go away and think about the stories. The best theatre leaves people thinking or, equally, if they leave with a smile, that's good too. Whether as myself with Straight Up Theatre or with the group Jump Through Hoops Theatre, we are just a bunch of actors doing our bit to provide entertaining theatre."

**Anyone interested in attending the Straight Up Theatre workshops at Cavendish School in 2012 should contact Peter via email at [peter@petersundby.co.uk](mailto:peter@petersundby.co.uk)**



## The Sky Lounge

The Sky Lounge at the AEGON International overlooks Centre and No. 1 Courts, offering unrivalled views of the tennis action. This light and contemporary suite offers a first class hospitality experience and is the perfect place for relaxing, dining and watching outstanding tennis.

Our package options are flexible offering tables for 2 – 10 guests.

### The Sky Lounge Hospitality Package Includes:

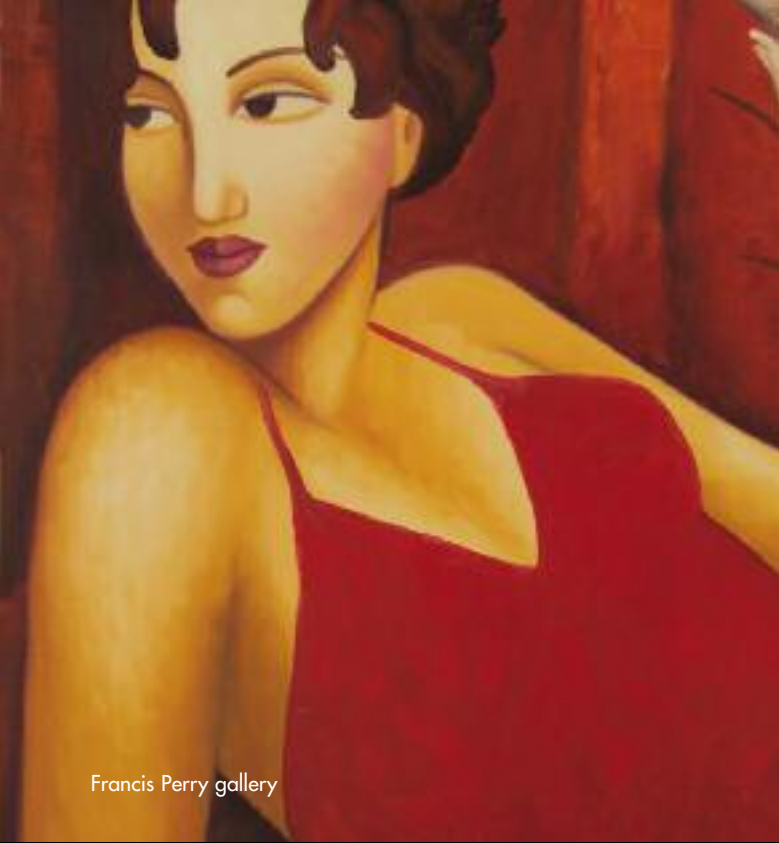
- Hospitality for 2 – 10 guests
- Reserved tickets in a block (premium seating allocation)
- Pimm's and canapé reception
- Delicious three course lunch
- Afternoon tea
- Car parking pass (1 per 2 guests)
- Souvenir programme (1 per 2 guests)

DATE	ORDER OF PLAY (provisional)	PRICE
Monday 18th June	Qualifying Round/First Round	£169
Tuesday 19th June	First Round	£169
Wednesday 20th June	Second Round	£189
Thursday 21st June	Quarter-Finals	£199
Friday 22nd June	Semi-Finals	£199
Saturday 23rd June	Finals	£199

All prices are per person and are exclusive of VAT

**Tracey Ledger**  
01323 646 076  
[hospitality@aegoninternational.co.uk](mailto:hospitality@aegoninternational.co.uk)





Francis Perry gallery

**Register to receive CQ's e-newsletter by February 17 and be entered into a prize draw to win a £50 voucher for artwork from Francis Perry gallery, or two tickets to Neighbourhood Watch at the Devonshire Park Theatre.**

Email your name, address and telephone number (so we can let you know if you've won) to [faye@prgltd.co.uk](mailto:faye@prgltd.co.uk) with the subject heading 'CQ competition'.

You can keep up to date on Eastbourne's artistic and theatrical events from your home with an annual subscription to Cultural Quarterly. Send us a cheque made payable to PRG Ltd for £10, along with your name, address, telephone number and email address, to receive four stunning issues as they are published and be entered into the prize draw.

Send to: Cultural Quarterly, PRG Ltd, The Point, College Road, Eastbourne BN21 4JJ.

# Register & Win!



Neighbourhood Watch

**You can pick up a free copy of Cultural Quarterly at any of the following outlets:**

- All Saints Chapel, *Darley Road*
- Berkeley Homes, *Darley Road*
- Birley Centre, *Carlisle Road*
- Bonnars Music Superstore, *Langney Road*
- Central Eating, *Terminus Road*
- Charleston, *Firle, Lewes*
- Chatsworth Hotel, *Royal Parade*
- Congress Theatre, *Carlisle Road*
- Devonshire Park Theatre, *Compton Street*
- District General Hospital, *Kings Drive*
- Eastbourne Audi, *Edward Road*
- Eastbourne College Theatre, *Old Wish Road*
- Eastbourne Central Library, *Grove Road*
- Emma Mason Gallery, *Cornfield Terrace*
- Energie Fitness, *Grove Road*
- Enterprise Centre, *Station Parade*
- Farley's Farm, *Chiddingly*
- Francis Perry, *Susans Road*
- Grand Hotel, *King Edwards Parade*
- Hop Galley, *Lewes*
- Hydro Hotel, *Mount Road*
- Langham Hotel, *Royal Parade*
- Nigel Greaves Gallery, *Compton Street*
- Plantations Coffee Shop, *Carlisle Road*
- Thai Village, *Willingdon*
- The Star Inn, *Alfriston*
- Tourist Information Centre, *Cornfield Road*
- Town Hall, *Grove Road*
- Towner, *Carlisle Road*
- University of Brighton, *Darley Road*
- Waitrose, *High Street*
- Yummy Noodle Bar, *Enterprise Centre, Station Parade*

PRG Ltd and associated companies may use your information to contact you for marketing purposes. By including your email and telephone numbers you are agreeing that they may be used for this purpose. Please indicate if you do not wish to receive information from PRG Ltd and its associated companies in your response.



# Talking Point

CQ talks to artist Mary Beaney about her December exhibitions and the difference between her older and newer work.

## PPP – Painting And Photography At Printers

Printers  
October 1–December 31

## Christmas Exhibition

The Coach House, Alfriston  
December 1–31

(Above left)  
*Flamingo* by Adam Beaney.

(Above right)  
*Outer Harbours* by Mary Beaney.

(Right)  
*Mixed Bunch* by Mary Beaney.

(Below)  
*Leeks In A Basket* by Mary Beaney.

**Artist Mary Beaney and her son and photographer Adam Beaney are showing their work in the exhibition PPP – Painting And Photography At Printers until the end of December. The exhibition at Printers in Station Street, Eastbourne, showcases Mary’s still life work and Adam’s wildlife photography and will be part of the Christmas Open Houses event.**

Mary said: “At Printers, you can pop upstairs to the gallery space and browse amongst the paintings of flowers, still life and figurative abstractions, and the wildlife photography of the beautiful animals of Kenya. It



gives you another opportunity to peruse our work and maybe contemplate buying a piece for Christmas.”

Mary showed her new work, inspired by a family heirloom left to Mary by her mother, at the Battle Art Fair in November.

She said: “The Battle Art Fair was a stunning and exhilarating exhibition of three hundred works by seventy artists. The centrepiece was the new sculpture *Into The Light* by Guy Portelli, which celebrates the life of Nelson Mandela.

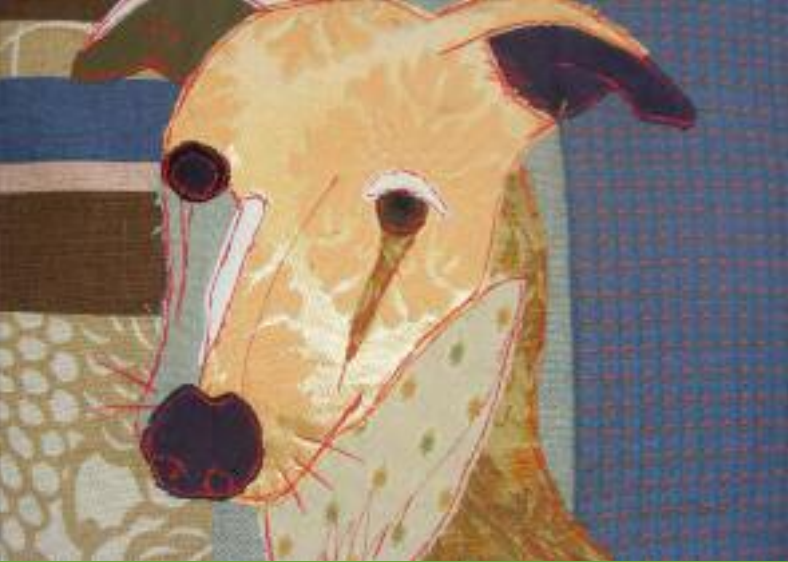
“I showed three paintings

that are part of my series of work inspired by an inherited Victorian photograph album – most enlightening if you are interested in family genealogy. The paintings are loosely based on the style of Byzantine icons – luscious and rich reds, blues and greens framed in gold.”

Mary will show her newer work again in the Christmas Exhibition at The Coach House in Alfriston on December 1–31.

She said: “I’m involved in another new venture in Alfriston for the whole of December to coincide with all the Christmas festivities there, including the Dickensian festival. There are 21 artists involved, mainly from Artflow, of which I’m a member, and the Chalk Gallery in Lewes.

“My newer work has more substance underlying the narrative. Every painting has a story. There’s more thought behind it, more of a talking point.”



# Tale of Two Galleries

Two local galleries are showing new exhibitions in December.

## **Both the Nigel Greaves Gallery in Eastbourne and the Hop Gallery in Lewes will have new exhibitions for the Christmas period and beyond.**

Serene seascapes, landscapes and abstract works make up the new autumn exhibition at Nigel Greaves Gallery in Compton Street, Eastbourne. The new paintings, which will be shown in tandem with Nigel's retrospective exhibition until the end of March, were produced during the current year.

Nigel studied fine art, art history and graphic design under Robert Tavener, Bob Miller and Geoffrey Flint in the 1960s. He opened his gallery in 2005 and his work attracts collectors from all over the world.

He said: "My new seascapes aim to reflect on our enduring fascination and enchantment with the sea. I paint in high quality pigments I mix myself with an acrylic base and polymer,



and often use an impasto technique to produce effects that add strength and texture.

"The latest seascapes seek to capture the vastness and ever changing character of the sea, featuring a wide range of contemporary interpretations of beaches, serene calm waters and shorelines."

The Sussex Arts Collective returns to the Hop Gallery in Castle Ditch Lane, Lewes, on December 1–22 in collaboration with Mohamed Hamid Star Brewery Pottery for the Christmas exhibition Yuletide!

The Sussex Arts Collective is a group of artists and craftspeople formed in 2006 by Phil Duncan to promote the

work of its members, build networks between local artists and provide good quality exhibition spaces in commercial and open house venues.

Angie Osborne, director at the Hop Gallery, said:

"Following on from the highly successful Noel exhibition of 2010, this year's Christmas show Yuletide! marks yet another year of outstanding art exhibitions staged at the Hop Gallery.

"This year, the Sussex Arts Collective joins forces with the renowned Mohamed Hamid Star Brewery Pottery. In keeping with the policy adopted by the collective, this show sets out to represent the full range of art and craft disciplines, from beautifully turned wood, jewellery, glass, textiles and ceramics to fine art painting, printing and photography. The work is always of the highest standard, yet instantly appealing and very affordable."

## **Autumn Art Exhibition**

Nigel Greaves Gallery  
November–March

## **Yuletide!**

Hop Gallery  
December 1–22

*(Above left)*  
*Whippet cushion*  
by Carola van Dyke.

*(Above right)*  
*St Tropez* by Nigel Greaves.

*(Left)*  
*Rose and velvet clutch bag*  
by Louise Turner-Creasey.



# Melting Music

CQ talks to Anna Moulson of music promoter Melting Vinyl, which has recently been diverging into Eastbourne venues.

## **The Vaccines**

Winter Garden  
December 6

## **Digital Christmas Carnival**

Towner  
Over 18s – December 9  
Under 18s – December 10

(Above)  
*The Vaccines.*

**This year, independent promoter Melting Vinyl has been branching out of Brighton and using Eastbourne venues for its music events. In December, The Vaccines will play the Winter Garden and Towner will host the Digital Christmas Carnival.**

Anna Moulson, director at Melting Vinyl, said: “Eastbourne audiences are very receptive and enthusiastic and welcoming. Brighton audience sometimes get jaded with so much music to choose from. There’s a definite audience and need for gigs in Eastbourne.

“We are part of the Christmas Carnival event at Towner on December 9 with a digital funfair, Transformer and Teen Creep DJs, and the following night for under 18s. It should be very entertaining.”

The Vaccines will visit Eastbourne as part of their

biggest tour so far. Their acclaimed album *What Did You Expect From The Vaccines* has received a host of awards, including being recognised by the BBC as one of the sounds of 2011 alongside Jessie J and James Blake. Drawing inspiration from The Jesus & Mary Chain, The Clash and The Velvet Underground, their sound takes you back to when punk was the rebellious music of choice.

Towner and the Winter Garden fit well into the eclectic mix of venues booked by Melting Vinyl, which can vary from intimate spaces and unusual places, such as cinemas and churches, to the 1,800 capacity Brighton Dome.

Anna said: “Melting Vinyl is a truly independent promotions company. Local people work with us and we keep the money in the city of Brighton, and are very much

inspired by its creative, buzzing, sunny shores. It’s all music that’s our personal taste and that people want to hear. It’s important to us that the shows are well booked and well presented and that, ultimately, people enjoy themselves.

“Brighton has an incredible store of talented local bands, which we try to promote regularly, especially folk that come along to our shows. We look for a good live show and affordability, plus whether it fits with what we understand and know how to market.”

Anna’s advice to artists and bands looking to break into the music industry is to find out how it works for themselves.

She said: “Break it yourself, learn the industry by putting on your own shows, doing your own releases – it’s how most of the bands who are touring are making money out of what they love to do.”

# Eastbourne Presents...

## PPP – PAINTING AND PHOTOGRAPHY AT PRINTERS

PRINTERS  
Sat 1 October–Sat 31 December  
See page 25



## FRANZISKA FURTER: STRAY CURRENTS

TOWNER  
Sat 8 October–Mon 2 January

## NEW EYES

TOWNER  
Sat 22 October–19 February  
See page 18

## MIXED MEDIA EXHIBITION

BIRLEY CENTRE  
Sat 26 November–Wed 18 January

## CHRISTMAS EXHIBITION

THE COACH HOUSE, ALFRISTON  
Thu 1–Sat 31 December  
See page 25

## YULETIDE

HOP GALLERY  
Thu 1–Thu 22 December  
See page 26

## RATTONIANS PRESENTS A CHRISTMAS SPECTACULAR

CONGRESS THEATRE  
Thu 1–Sat 3 December, 7.30pm  
Sat Mat, 2.30pm

## TWO

LAMB THEATRE  
Fri 2–Sat 3 December, 7.45pm

## GORDON HUTSON

UNDER GROUND THEATRE  
Sat 3 December, 10.00am

## SOUTHERN YOUTH BALLET PRESENTS THE NUTCRACKER

CONGRESS THEATRE  
Sun 4 December, 5.00pm

## RICHARD DURRANT CANDLELIT CHRISTMAS RECITAL

ALL SAINTS CHAPEL  
Sun 4 December, 7.30pm

## THE SECRET LOVE LIFE OF OPHELIA

LITTLE THEATRE  
Mon 5–Tue 6 December, 7.30pm



## THE VACCINES

WINTER GARDEN  
Tue 6 December, 7.00pm  
See page 27

## A CHRISTMAS REVUE

UNDER GROUND THEATRE  
Wed 7 December, 7.30pm

## A VOICE THAT'S MINE

UNDER GROUND THEATRE  
Thu 8 December, 7.00pm

## THE ADVENTURES OF ROBIN HOOD

DEVONSHIRE PARK THEATRE  
Fri 9 December–Sun 15 January



## BRASS VOLCANOES

UNDER GROUND THEATRE  
Fri 9 December, 8.00pm

## DIGITAL CHRISTMAS CARNIVAL

TOWNER  
Fri 9 December, 9.00pm  
See page 27

## R'N'R

UNDER GROUND THEATRE  
Sat 10 December, 10.00am

## THE ALBION CHRISTMAS BAND

PAVILION HAILSHAM  
Sat 10 December, 7.30pm

## A CHRISTMAS CAROL, AS TOLD BY JACOB MARLEY (DECEASED)

UNDER GROUND THEATRE  
Sat 10 December, 7.30pm

## CHRISTMAS CREATIONS

TOWNER  
Sun 11 December, 11.00am

## LITTLE THEATRE'S TRADITIONAL CHRISTMAS

LITTLE THEATRE  
Wed 14 December, 7.30pm



## CAROL CONCERT

ALL SAINTS CHAPEL  
Sat 24 December, 7.00pm

## TEA DANCES

WINTER GARDEN  
Tue 10 January, 2.00pm

## ROCK THE CAV BAR

LITTLE THEATRE  
Wed 11 January, 7.30pm



## POCKETSIZE

UNDER GROUND THEATRE  
Sat 14 January, 10.00am

## TARGET

CONGRESS THEATRE  
Sat 14 January, 7.00pm

## JIVE ACES

PAVILION HAILSHAM  
Sat 14 January, 7.30pm



## SECRETS OF THE MARY ROSE

UNDER GROUND THEATRE  
Sun 15 January, 3.00pm

## LONDON PHILHARMONIC ORCHESTRA

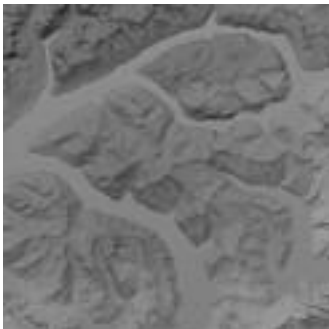
CONGRESS THEATRE  
Sun 15 January, 3.00pm  
See page 16



**NEW EYES COMES ALIVE**  
TOWNER  
Sun 22 January, 11.00am

**SISTER ACT**  
CONGRESS THEATRE  
Tue 24 January–  
Sat 4 February, 7.30pm  
Thu & Sat Mat, 2.30pm

**BOBBY WELLINS &  
ANDREA POZZA TRIO**  
UNDER GROUND THEATRE  
Fri 27 January, 8.00pm



**IGLOO: VISITOR**  
TOWNER  
Sat 28 January–Sun 1 April  
See page 4



**GADZOOKS**  
UNDER GROUND THEATRE  
Sat 28 January, 10.00am

**THE GLEE SHOW**  
DEVONSHIRE PARK THEATRE  
Sat 28 January, 2.30pm & 7.00pm

**MARCHING TO MUSIC**  
BIRLEY CENTRE  
Sat 28 January  
See page 12

**MARTIN SIMPSON TRIO**  
PAVILION HAILSHAM  
Sat 28 January, 7.30pm

**STEVE KNIGHTLEY**  
PAVILION HAILSHAM  
Sat 4 February, 7.30pm



**FEDERICA MOSSONE**  
UNDER GROUND THEATRE  
Sun 5 February, 2.45pm

**TEA DANCES**  
WINTER GARDEN  
Tue 7 February, 2.00pm

**JOHANN STRAUSS GALA**  
CONGRESS THEATRE  
Thu 9 February, 7.30pm

**JIVE TALKIN'**  
CONGRESS THEATRE  
Fri 10 February, 7.30pm

**CORNFLOWER BLUE & FRIENDS**  
UNDER GROUND THEATRE  
Sat 11 February, 10.00am

**PROM PRAISE**  
CONGRESS THEATRE  
Saturday 11 February, 7.30pm

**LONDON PHILHARMONIC  
ORCHESTRA**  
CONGRESS THEATRE  
Sunday 12 February, 3.00pm

**LA BOHEME**  
CONGRESS THEATRE  
Mon 13 February, 7.30pm

**MADAMA BUTTERFLY**  
CONGRESS THEATRE  
Tue 14 February, 7.30pm

**AN INSTINCT FOR  
KINDNESS**  
UNDER GROUND THEATRE  
Sat 18 February, 7.30pm  
See page 8

**LONDON COMMUNITY  
GOSPEL CHOIR**  
PAVILION HAILSHAM  
Sat 18 February, 7.30pm



**THE COURT JESTER**  
UNDER GROUND THEATRE  
Sun 19 February, 2.30pm

**KELVIN CHRISTIANE QUARTET**  
UNDER GROUND THEATRE  
Fri 24 February, 8.00pm

**GLYN BURGESS, LISA  
JACKSON & THE BOTTICELLIS**  
UNDER GROUND THEATRE  
Sat 25 February, 10.00am



**ANTON & ERIN**  
CONGRESS THEATRE  
Sun 26 February, 3.00pm & 7.30pm

**NEIGHBOURHOOD WATCH**  
DEVONSHIRE PARK THEATRE  
Mon 27 February–  
Sat 3 March, 7.45pm  
Wed & Sat Mat, 2.30pm

**GISELLE**  
CONGRESS THEATRE  
Thu 1–Sun 4 March, 7.30pm  
Sat & Sun Mat, 2.30pm

**LOS PACAMINOS WITH  
PAUL YOUNG**  
PAVILION HAILSHAM  
Sun 4 March, 7.30pm

## To Book Tickets:

All Saints Chapel:

**01323 728889 [www.allsaintschapel.co.uk](http://www.allsaintschapel.co.uk)**

Birley Centre, Eastbourne College Theatre:

**01323 452255 [boxoffice@eastbourne-college.co.uk](mailto:boxoffice@eastbourne-college.co.uk)**

Congress Theatre, Devonshire Park Theatre, Winter Garden:

**01323 412000 [www.eastbournetheatres.co.uk](http://www.eastbournetheatres.co.uk)**

Hop Gallery:

**[www.hopgallery.com](http://www.hopgallery.com)**

Lamb Theatre:

**08456 801926 [www.thelambtheatre.co.uk](http://www.thelambtheatre.co.uk)**

Little Theatre:

**01323 744298 <http://littletheatre.biz>**

Pavilion Hailsham:

**01323 841414 [www.pavilionhailsham.co.uk](http://www.pavilionhailsham.co.uk)**

Towner:

**01323 434670 [www.townereastbourne.org.uk](http://www.townereastbourne.org.uk)**

Under Ground Theatre:

**01323 737677 [www.undergroundtheatre.org.uk](http://www.undergroundtheatre.org.uk)**



# Presenting For Your Enjoyment...

There are several amateur dramatic societies in Eastbourne. Here, CQ gives a roundup of what some of them have to offer this season.

## **Polegate Drama Group**

The Polegate Community Association Drama Group will perform *Snow White & The Seven Dwarfs*, the group's forty-first pantomime, on January 14–22 2012 at the Polegate Community Centre in Windsor Way, Polegate.

Based on the classic Grimm fairytale and recognisable from the famous film, the production will be full of pantomime fun, familiar songs, dazzling sets and colourful costumes. Written by Alan Frayn, the play is devised by David Buck, directed by Sue Wood and Amanda Roach, and featuring the Sue Wood Dancers.

**Tickets are available from Archer & Partners in High Street, Polegate, or on 01323 483348 [polegatedramagroup.co.uk](http://polegatedramagroup.co.uk)**

## **The Rattonians**

The Rattonians will present their favourites from the musicals and a festive treat in *A Christmas Spectacular* on December 1–3 at the Congress Theatre. The group will sing their favourite show songs with a full supporting company, and the Rattonian Youth Group will perform a mix of song and dance from musicals through the years.

The show will include Christmas classics, such as *White Christmas*, and *Father Christmas* has promised a special visit complete with snow.

Mark and Melanie Adams will produce, Carl Greenwood will conduct the orchestra, Jan Lynton will choreograph and Debbie Hackett will direct the Rattonian Youth Group. **Tickets available on 01323 412000 [www.rattonians.com](http://www.rattonians.com)**

## **Southern Youth Ballet**

The Southern Youth Ballet, a company of 50 young dancers from East and West Sussex, Kent and Hampshire, will present a traditional production of *The Nutcracker* on December 4 at the Congress Theatre. The ballet's two acts tell the story of Clara and a prince transformed into the Nutcracker who battle the Mouse King and visit the Sugar Plum Fairy.

Tchaikovsky's music will be performed by the Southern Youth Ballet Orchestra, conducted by Kenneth Roberts. **Tickets are available on 01323 412000 [southernyouthballet.co.uk](http://southernyouthballet.co.uk)**

*(Above)  
The Rattonians will present  
A Christmas Spectacular.*

# 2011

# Buy with Confidence!



Our reputation has been built on excellence!

# HKS

Kitchens ♦ Bedrooms ♦ Bathrooms ♦ Studies

231 Seaside, Eastbourne. 01323 639446  
138 London Road, St. Leonards-on-Sea. 01424 443464  
Hill House, Mutton Hall Hill, Heathfield. 01435 865599  
104 South Road, Haywards Heath. 01444 452222  
[www.hks-uk.com](http://www.hks-uk.com)



- ◆ Over 100 stunning displays
- ◆ Exceptional value for money
- ◆ Expert craftsmanship
- ◆ An established family business
- ◆ Independent Consumer Deposit Protection (Details available on request)



# Hydro Hotel

Eastbourne

## Pre-Christmas Luncheon in the Crystal Restaurant

Festive 3 Course Lunch Menu with Coffee and Mints

1st - 23rd December 2011

£18.95 per person

## Pre-Christmas Afternoon Tea

Festive Afternoon Tea served in the  
Wedgwood Room

Limited Dates in December 2011

£10.95 per person

## New Years Eve Gala Dinner

5 Course Dinner Menu with Coffee and Mints

Followed by Disco until 1am

31st December 2011

Tickets £75.00 per person

## Midweek Luncheon in the Crystal Restaurant

From 1st January 2012

2 Course Midweek Luncheon with Coffee £11.50

3 Course Midweek Luncheon with Coffee £15.50

3 or 4 Course Sunday Luncheon from £16.95

For more details visit our website @

[www.hydrohotel.com](http://www.hydrohotel.com)

or to make your reservation

telephone our sales team on

01323 720643

Mount Road • Eastbourne • BN20 7HZ • Telephone 01323 720643

Email: [sales.office@hydrohotel.com](mailto:sales.office@hydrohotel.com) Web: [www.hydrohotel.com](http://www.hydrohotel.com)